



LIN

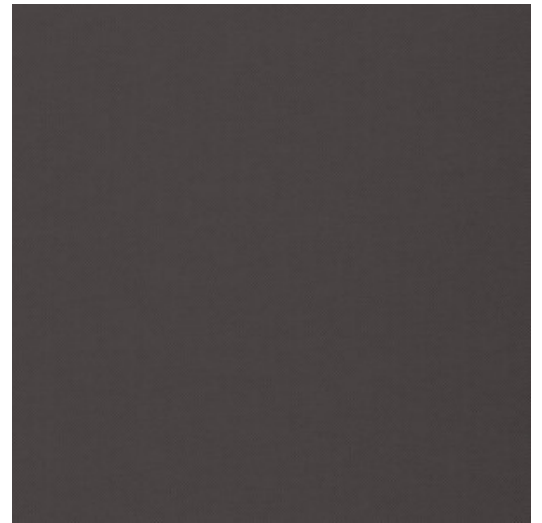
Collection Flamant Suite II - Les Rayures

Story behind the collection

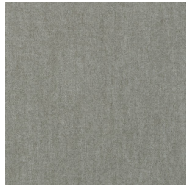
The name speaks for itself. This entire collection revolves around one design, stripes. Without doubt, the simplest pattern in the world but one that still offers endless interior styling options. Simply by changing the direction, a stripe pattern can create an entirely different spatial effect.

Technical specifications

Reference	<u>30101</u> • Noir de Lune
Product category	Refined
Composition	Non-woven wallcovering
Description	Wallpaper with a refined linen texture
Dimensions	Rolls of 8.50 m x 0.70 m = 6 m ² (9.30 yds x 27.56" = 64 sq. ft.)
Pattern repeat	Free match 0 cm (0.00")
Adhesive	Arte Clearpro or a good quality dispersion adhesive
How to paste	Paste the wall
Light resistance	Good lightfastness
How to remove	Strippable
Fire retardant EU	B-s1, d0
Fire retardant US	Class A
Maintenance	Extra-washable
IMO Certified	 0493/22



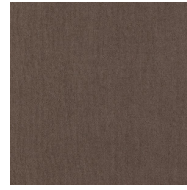
Colourways (19)



30100



30101



30102



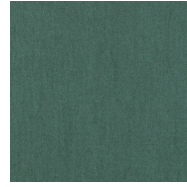
30103



30104



30105



30106



30107



30108



30109



30110



30111



30112



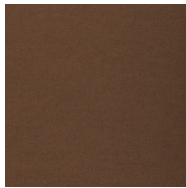
30113



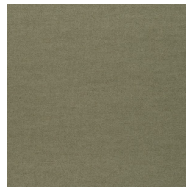
30114



30115



30116



30117



30118

More info? [Click here](#)

Order samples, calculate quantities, view instructional videos, download technical information and more:
www.arte-international.com



ARTE®

wallcoverings for the ultimate in refinement