

# SELECT

Collection Enigma

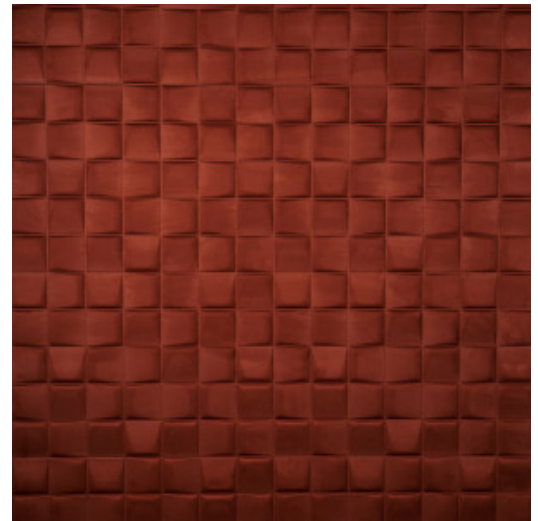


## Story behind the collection

The thermoforming technique that's used for this collection is special. During thermoforming, a shape is pressed into the fabric using heat. The shape is permanent but the material remains supple and strokable. In one smooth movement you get three-dimensional wallcoverings. This special collection has three different patterns and three types of fabric: a matt fabric, a satin gloss fabric and a suede-look fabric. Also nice to know is that all the references in the Enigma collection have a positive acoustical effect.

## Technical specifications

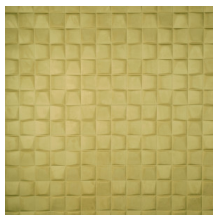
Reference	<u>30522</u>
Product category	Couture
Composition	3D textile wallcovering on non-woven backing
Dimensions	Width 121.5 cm (47.83"), sold by the linear metre/yard
Pattern repeat	Straight match 43 cm (16.93")
Remark	Stain and water repellent, positive acoustic effect
Adhesive	Arte Clearpro or a good quality dispersion adhesive
How to paste	Paste the wall
Light resistance	Available upon request
How to remove	Strippable
Fire retardant EU	B-s1, d0
Fire retardant US	Class A
Maintenance	Spongeable during hanging (dab away damp glue)



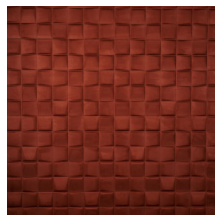
## Colourways (6)



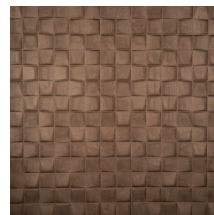
30520



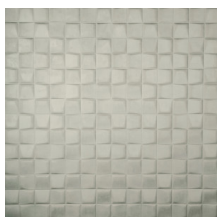
30521



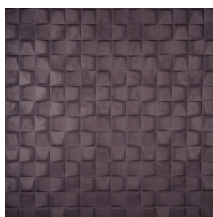
30522



30523



30524



30525

More info? [Click here](#)

Order samples, calculate quantities, view instructional videos, download technical information and more:  
[www.arte-international.com](http://www.arte-international.com)



ARTE®

wallcoverings for the ultimate in refinement