



# UNDER THE SYCAMORE TREE

Collection Emblème

## Story behind the collection

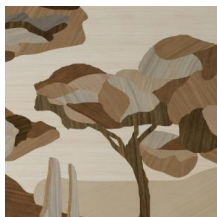
Arte has a long tradition of designing and manufacturing wallcoverings using the most unusual materials and innovative techniques. Combining bold patterns with a range of exceptional materials and cutting-edge techniques, this collection is nothing short of emblematic. Wood veneers, 3D textiles, and a high-gloss finish: each wallcovering in this collection will elevate your interior.

## Technical specifications

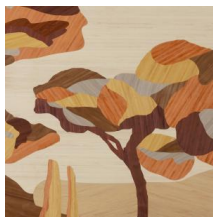
Reference	<u>30820</u> • Winter Landscape
Product category	Couture
Composition	Natural wallcovering on non-woven backing
Description	Hand-inlaid panorama, made from the finest wood veneer, in which every grain and nuance brings this wallcovering's natural character to life
Dimensions	Panoramic of 480 cm x 300 cm = 14.40 m <sup>2</sup> (188.98" x 118.11" = 155 sq. ft.)
Pattern repeat	Straight match 300 cm (118.11")
Remark	The pattern is repeatable, allowing several panoramics to be joined together.
Adhesive	Arte Clearpro or a good quality dispersion adhesive
How to paste	Moisten the product, paste the wall and paste the wallcovering
Light resistance	Moderate lightfastness
How to remove	Strippable
Fire retardant EU	B-s1, d0
Fire retardant US	Class A
Maintenance	Spongeable during hanging (dab away damp glue)



## Colourways (2)

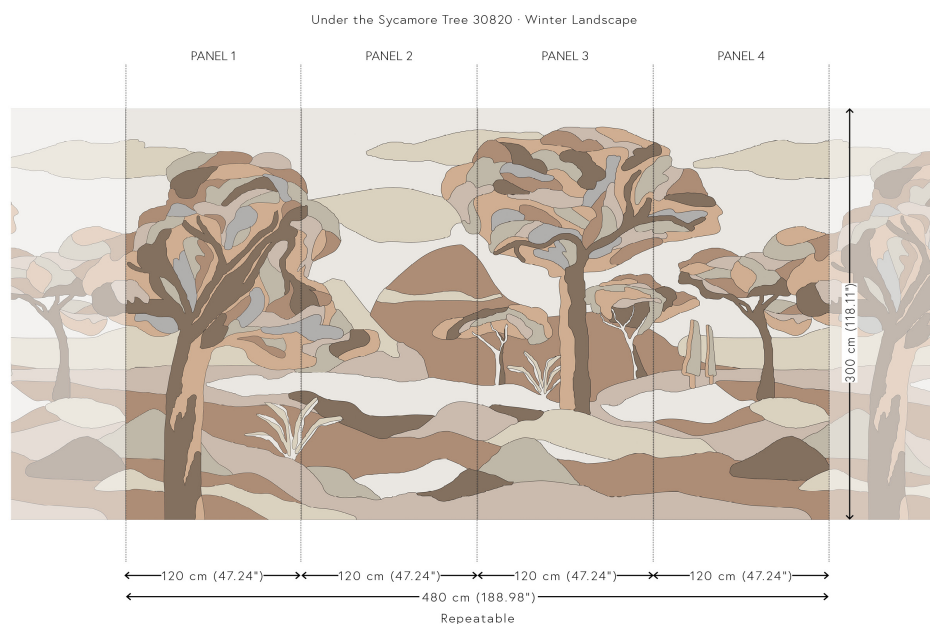


30820



30821

## View



More info? [Click here](#)

Order samples, calculate quantities, view instructional videos, download technical information and more:  
[www.arte-international.com](http://www.arte-international.com)



ARTE®

wallcoverings for the ultimate in refinement