

DOTS

Collection Le Corbusier - Dots

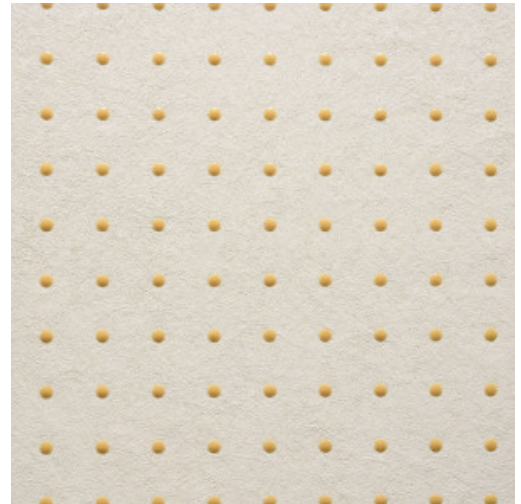


Story behind the collection

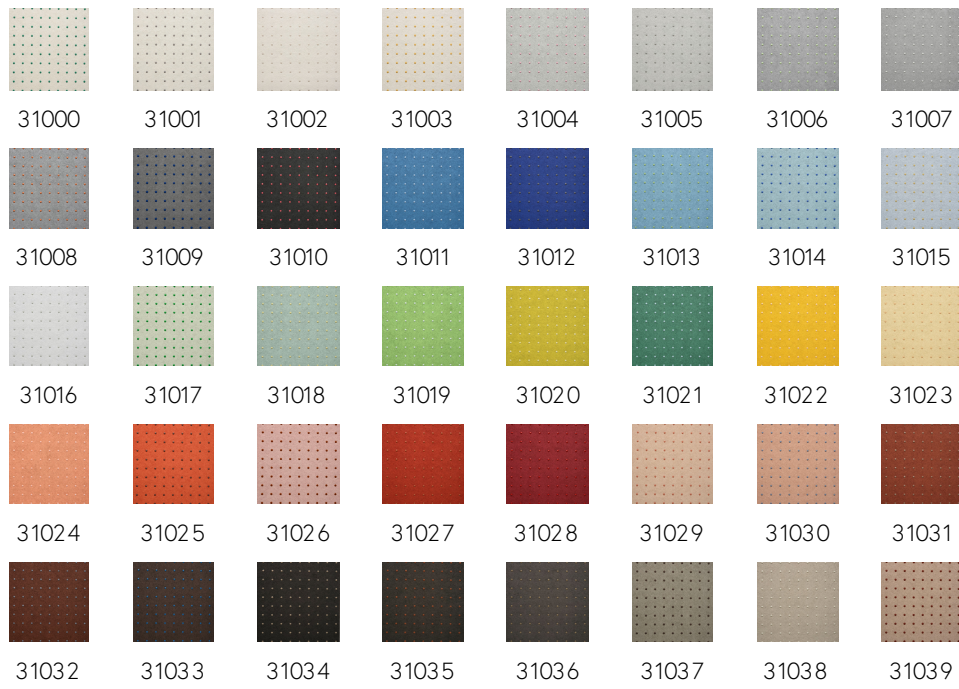
This designer wallcovering is a reinterpretation of Le Corbusier's own work; using all of the innovative techniques but faithful to his unique philosophy. The pattern is based on the wallcovering with a dotted pattern that he designed in 1931. The dots are, however, no longer applied in oil paint but with a high-gloss relief ink. They provide a subtle reflection which allows the wallcovering to play with light, as Le Corbusier did with his architecture.

Technical specifications

| | |
|------------------|---|
| Reference | 31003 • Ivory White |
| Product category | Refined |
| Composition | Wallpaper on non-woven backing |
| Description | Innovative wallpaper with glossy dots in 40 different colour combinations, based on Le Corbusier's 'Polychromie architecturale' |
| Dimensions | Rolls of 8.50 m x 0.70 m = 6 m ² (9.30 yds x 27.56" = 64 sq. ft.) |
| Pattern repeat | Straight match 1.4 cm (0.55") |
| Adhesive | Arte Clearpro or a good quality dispersion adhesive |
| How to paste | Paste the wall |
| Light resistance | Good lightfastness |
| How to remove | Strippable |
| Fire rating EU | B-s1, d0 |
| Fire rating US | Class A |
| Maintenance | Washable |
| IMO Certified | |



Colourways (40)



More info? [Click here](#)

Order samples, calculate quantities, view instructional videos, download technical information and more:
www.arte-international.com



ARTE®

wallcoverings for the ultimate in refinement