



DOTS

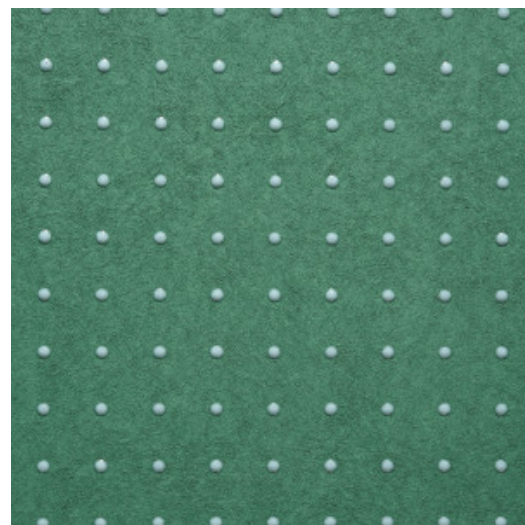
Collection Le Corbusier - Dots

Story behind the collection

This designer wallcovering is a reinterpretation of Le Corbusier's own work; using all of the innovative techniques but faithful to his unique philosophy. The pattern is based on the wallcovering with a dotted pattern that he designed in 1931. The dots are, however, no longer applied in oil paint but with a high-gloss relief ink. They provide a subtle reflection which allows the wallcovering to play with light, as Le Corbusier did with his architecture.

Technical specifications

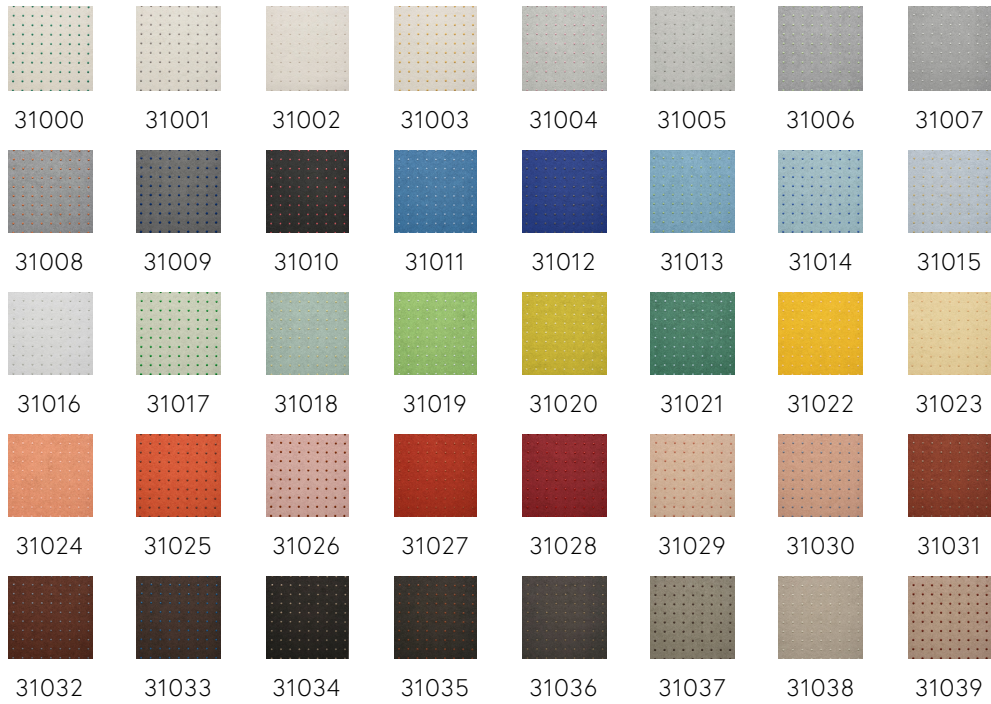
Reference	31021 • English Green
Product category	Refined
Composition	Wallpaper on non-woven backing
Description	Innovative wallpaper with glossy dots in 40 different colour combinations, based on Le Corbusier's 'Polychromie architecturale'
Dimensions	Rolls of 8.50 m x 0.70 m = 6 m ² (9.30 yds x 27.56" = 64 sq. ft.)
Pattern repeat	Straight match 1.4 cm (0.55")
Adhesive	Arte Clearpro or a good quality dispersion adhesive
How to paste	Paste the wall
Light resistance	Good lightfastness
How to remove	Strippable
Fire retardant EU	B-s1, d0
Fire retardant US	Class A
Maintenance	Washable
IMO Certified	



0493/22



Colourways (40)



More info? [Click here](#)

Order samples, calculate quantities, view instructional videos, download technical information and more:
www.arte-international.com



ARTE®

wallcoverings for the ultimate in refinement