



TAIO

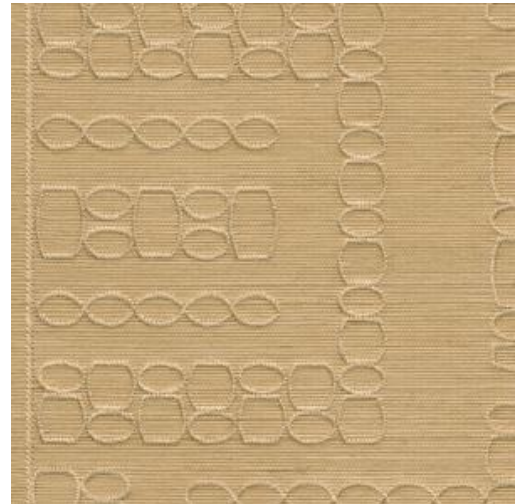
Collection Marquesa

Story behind the collection

Dramatic cliffs, pristine beaches and majestic palm trees: the Marquesas Islands tick all the boxes. Add a rich historical past to this already intriguing combination, and you can see why the Polynesian archipelago inspired the Marquesa collection. This exclusive wallcovering captures the natural splendour of these islands, in addition to paying tribute to their rich cultural heritage. It is a collection with influences from indigenous art and centuries-old crafts.

Technical specifications

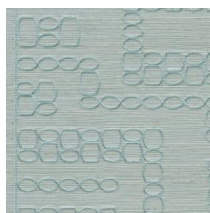
Reference	<u>31715</u> • Winter Sun
Product category	Exquisite
Composition	Natural wallcovering on non-woven backing
Description	Carefully embroidered pattern on a fine sisal fabric, with a background with a subtle sheen
Dimensions	Rolls of 9 m x 0.90 m = 8.1 m ² (9.84 yds x 35.43" = 87.19 sq.ft.)
Pattern repeat	Straight match 45 cm (17.72")
Adhesive	Arte Clearpro or a good quality dispersion adhesive
How to paste	Moisten the product, paste the wall
Light resistance	Moderate lightfastness
How to remove	Strippable
Fire retardant EU	B-s1, d0
Fire retardant US	Class A
Maintenance	Spongeable during hanging (dab away damp glue)



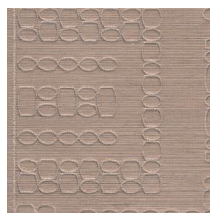
Colourways (6)



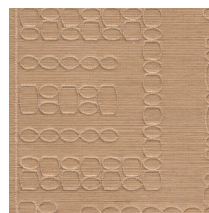
31710



31711



31712



31714

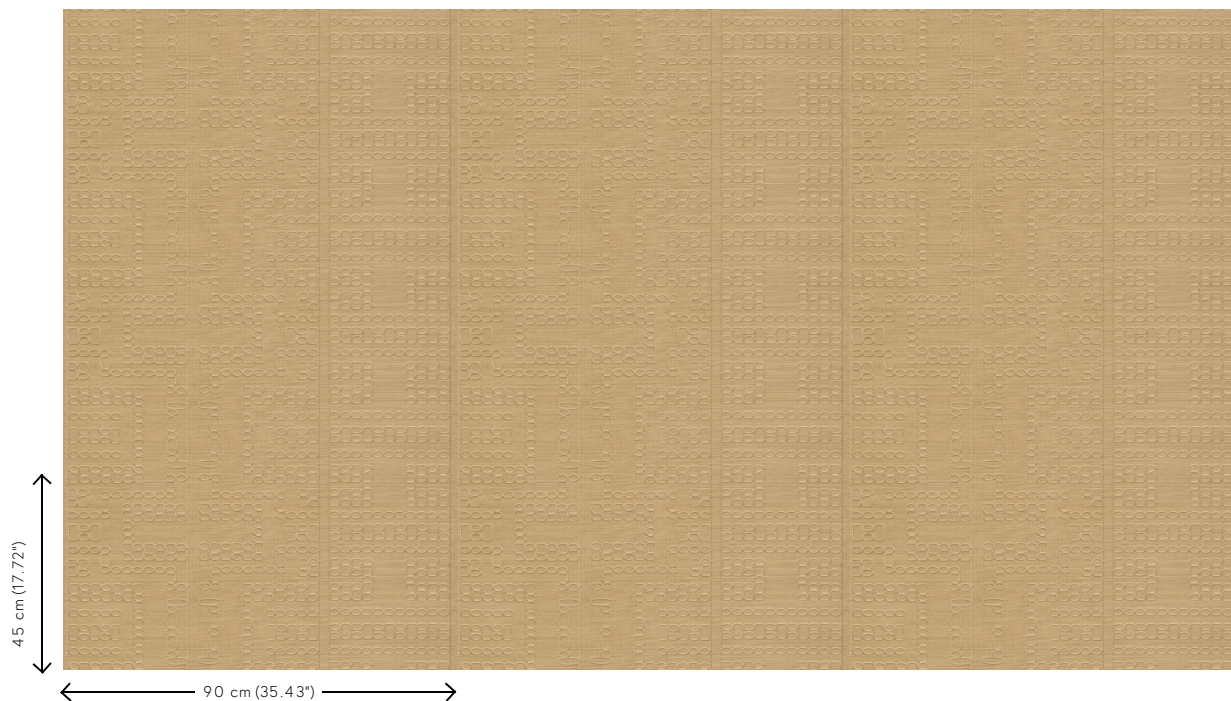


31715



31716

View



More info? [Click here](#)

Order samples, calculate quantities, view instructional videos, download technical information and more:
www.arte-international.com



ARTE®

wallcoverings for the ultimate in refinement