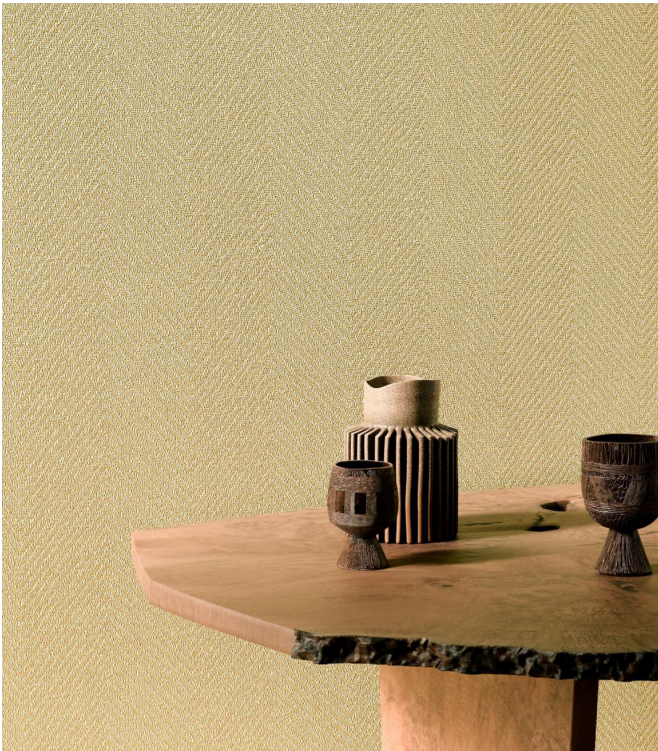


ATUONA

Collection Marquesa



Story behind the collection

Dramatic cliffs, pristine beaches and majestic palm trees: the Marquesas Islands tick all the boxes. Add a rich historical past to this already intriguing combination, and you can see why the Polynesian archipelago inspired the Marquesa collection. This exclusive wallcovering captures the natural splendour of these islands, in addition to paying tribute to their rich cultural heritage. It is a collection with influences from indigenous art and centuries-old crafts.

Technical specifications

Reference	<u>31720</u> • Soft Beige
Product category	Exquisite
Composition	Natural wallcovering on non-woven backing
Description	The chevron pattern combines the natural charm of paper and hessian in a sophisticated weave
Dimensions	Width 88 cm (34.56"), sold by the linear metre/yard
Pattern repeat	Straight match 1.7 cm (0.67")
Adhesive	Arte Clearpro or a good quality dispersion adhesive
How to paste	Moisten the product, paste the wall
Light resistance	Moderate lightfastness
How to remove	Strippable
Fire retardant EU	B-s1, d0
Fire retardant US	Class A
Maintenance	Spongeable during hanging (dab away damp glue)



Colourways (5)



31720



31721



31722



31723



31724

More info? [Click here](#)

Order samples, calculate quantities, view instructional videos, download technical information and more:
www.arte-international.com



ARTE®

wallcoverings for the ultimate in refinement