



MIRO

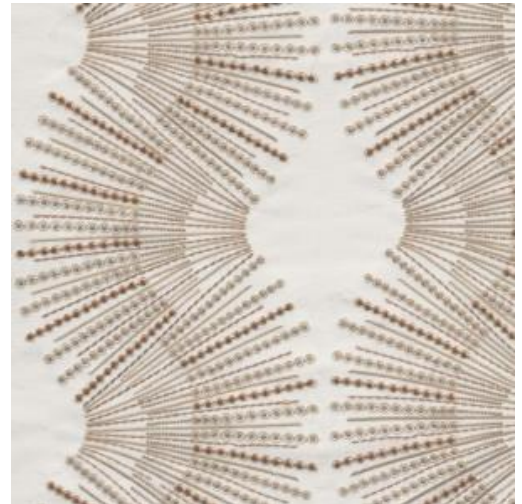
Collection Marquesa

Story behind the collection

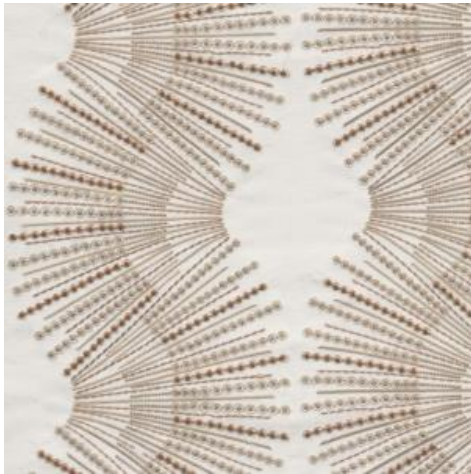
Dramatic cliffs, pristine beaches and majestic palm trees: the Marquesas Islands tick all the boxes. Add a rich historical past to this already intriguing combination, and you can see why the Polynesian archipelago inspired the Marquesa collection. This exclusive wallcovering captures the natural splendour of these islands, in addition to paying tribute to their rich cultural heritage. It is a collection with influences from indigenous art and centuries-old crafts.

Technical specifications

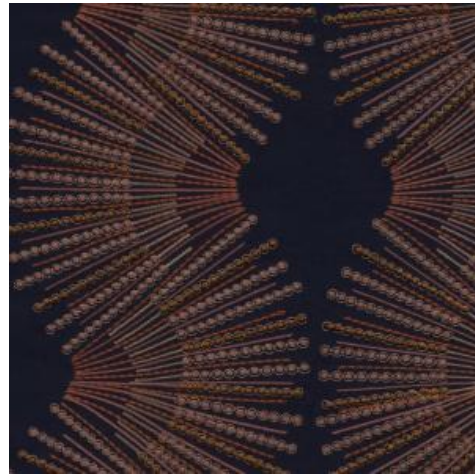
| | |
|-------------------|---|
| Reference | <u>31740</u> • Tinted White |
| Product category | Couture |
| Composition | Textile wallcovering on non-woven backing |
| Description | A combination of embroidery on textile with decorative wooden beads |
| Dimensions | Width 130 cm (51.18"), sold by the linear metre/yard |
| Pattern repeat | Straight match 40 cm (15.75") |
| Adhesive | Arte Clearpro or a good quality dispersion adhesive |
| How to paste | Paste the wall |
| Light resistance | Good lightfastness |
| How to remove | Strippable |
| Fire retardant EU | B-s1, d0 |
| Fire retardant US | Class A |
| Maintenance | Spongeable during hanging (dab away damp glue) |



Colourways (2)



31740



31741

More info? [Click here](#)

Order samples, calculate quantities, view instructional videos, download technical information and more:
www.arte-international.com



ARTE®

wallcoverings for the ultimate in refinement