

# ASPECT

Collection Les Cuirs

## Story behind the collection

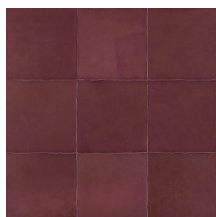
Stylish, exclusive and absolutely distinctive, this is the concept of Les Cuirs.

## Technical specifications

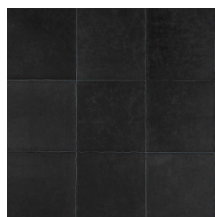
Reference	<u>33542</u> • Honey
Product category	Couture
Composition	Natural wallcovering on non-woven backing
Description	Real cowhide leather wallcovering with a coarse stitching
Dimensions	Width 100 cm (39.37"), sold by the linear metre/yard
Pattern repeat	Free match 0 cm (0.00"), respecting the design height of 33 cm (12.99")
Remark	Wallcovering made from 100% cowhide leather. Every single piece of leather is unique and stitched together in a random order, creating a varied and one of a kind leather patchwork. Due to the artisanal process and the natural aspects of the material, imperfections, unique colour variations and irregularities occur. Differences between samples and finished product characterise the natural beauty of Les Cuirs
Adhesive	Arte Clearpro or a good quality dispersion adhesive
How to paste	Paste the wall
Light resistance	Moderate lightfastness
How to remove	Strippable
Fire retardant EU	D-s2, d0
Maintenance	Spongeable during hanging (dab away damp glue)



## Colourways (16)



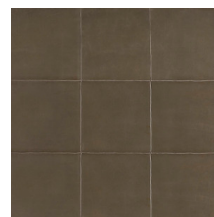
33540



33541



33542



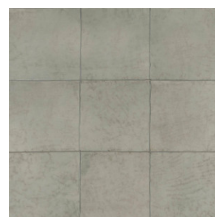
33543



33544



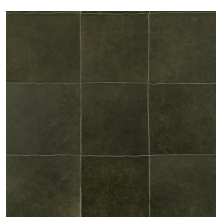
33545



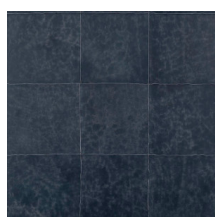
33546



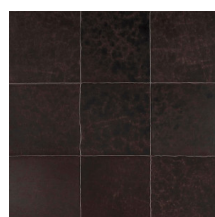
33547



33548



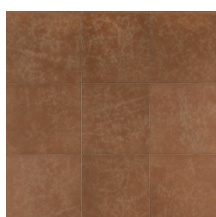
33549



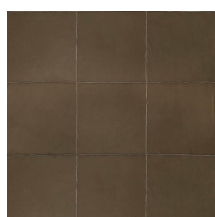
33550



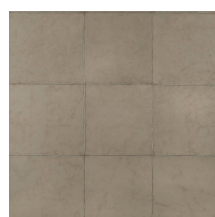
33551



33552



33553



33554



33555

## View



More info? [Click here](#)

Order samples, calculate quantities, view instructional videos, download technical information and more:  
[www.arte-international.com](http://www.arte-international.com)



ARTE®

wallcoverings for the ultimate in refinement