

STELLAR


Collection Lush

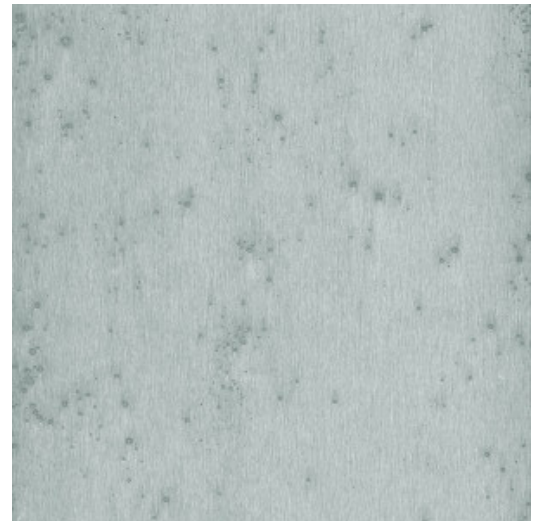


Story behind the collection

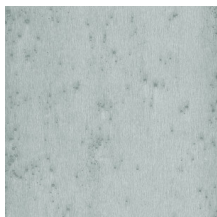
The rich fabrics of rib velvet, lush botanical prints and sophisticated weaving techniques make Lush a very detailed and luxurious collection. The cool metal accents combine perfectly with the soft, velvet fabrics and complete the look.

Technical specifications

| | |
|-------------------|---|
| Reference | <u>37502A</u> |
| Product category | Exquisite |
| Composition | Metallic wallcovering on non-woven backing |
| Description | Wallcovering made of real metal foil with an oxidised effect |
| Dimensions | Width 91.44 cm (36.00"), sold by the linear metre/yard |
| Pattern repeat | Free match 0 cm (0.00") |
| Remark | During production, the metal foil goes through an intensive process that was developed especially for this collection. It is being coloured in such a way that it gives the wallcovering the nuances of an authentic metal look |
| Adhesive | Arte Clearpro or a good quality dispersion adhesive |
| How to paste | Moisten the product, paste the wall |
| Light resistance | Good lightfastness |
| How to remove | Strippable |
| Fire retardant EU | B-s1, d0 |
| Fire retardant US | Class A |
| Maintenance | Washable |
| IMO Certified |  0493/22 |



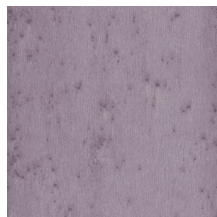
Colourways (12)



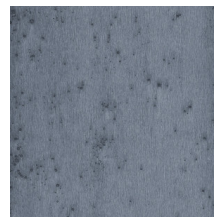
37502A



37503A



37504A



37506A



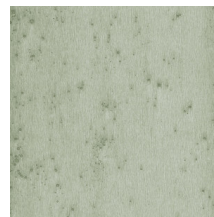
37508A



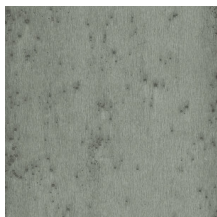
37509A



37510A



37512A



37513A



37519A



37522A



37523A

More info? [Click here](#)

Order samples, calculate quantities, view instructional videos, download technical information and more:
www.arte-international.com



ARTE®

wallcoverings for the ultimate in refinement