

DOMUS


Collection Metal X Signum



Story behind the collection

The patterns in this collection have been applied to the existing Stellar plain design in the Metal X range. This metallic wallcovering is based on the 'perfect imperfection' of an oxidising metal surface which combines an industrial and luxurious look.

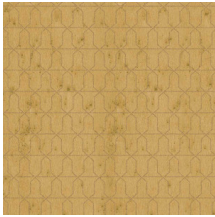
Technical specifications

Reference	<u>37615</u>
Product category	Exquisite
Composition	Metallic wallcovering on non-woven backing
Description	Wallcovering made of real metal foil with an oxidised effect and a print on matching tones, finished with a layer of satin lacquer or glass beads
Dimensions	Width 90 cm (35.43"), sold by the linear metre/yard
Pattern repeat	Straight match 12.8 cm (5.04")
Remark	During production, the metal foil goes through an intensive process that was developed especially for this collection. It is coloured in such a way that the wallcovering takes on the nuances of an authentic metal look. Finally, the patterns are finished with a thin layer of satin paint or glass beads. It is normal that the glass beads that do not touch the adhesive layer, come loose. This has no impact on the final result. The glass beads in the adhesive layer adhere firmly and form the pattern. Matching plains can be found in collection Metal X
Adhesive	Arte Clearpro or a good quality dispersion adhesive
How to paste	Moisten the product, paste the wall
Light resistance	Good lightfastness
How to remove	Strippable
Fire retardant EU	B-s1, d0
Fire retardant US	Class A
Maintenance	Washable
IMO Certified	



0493/22

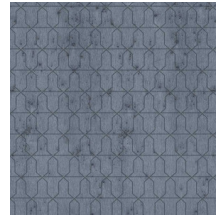
Colourways (6)



37610



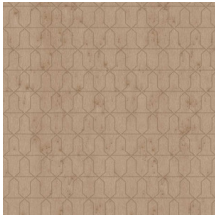
37611



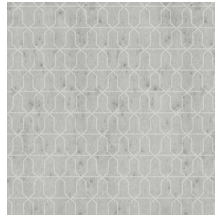
37612



37613

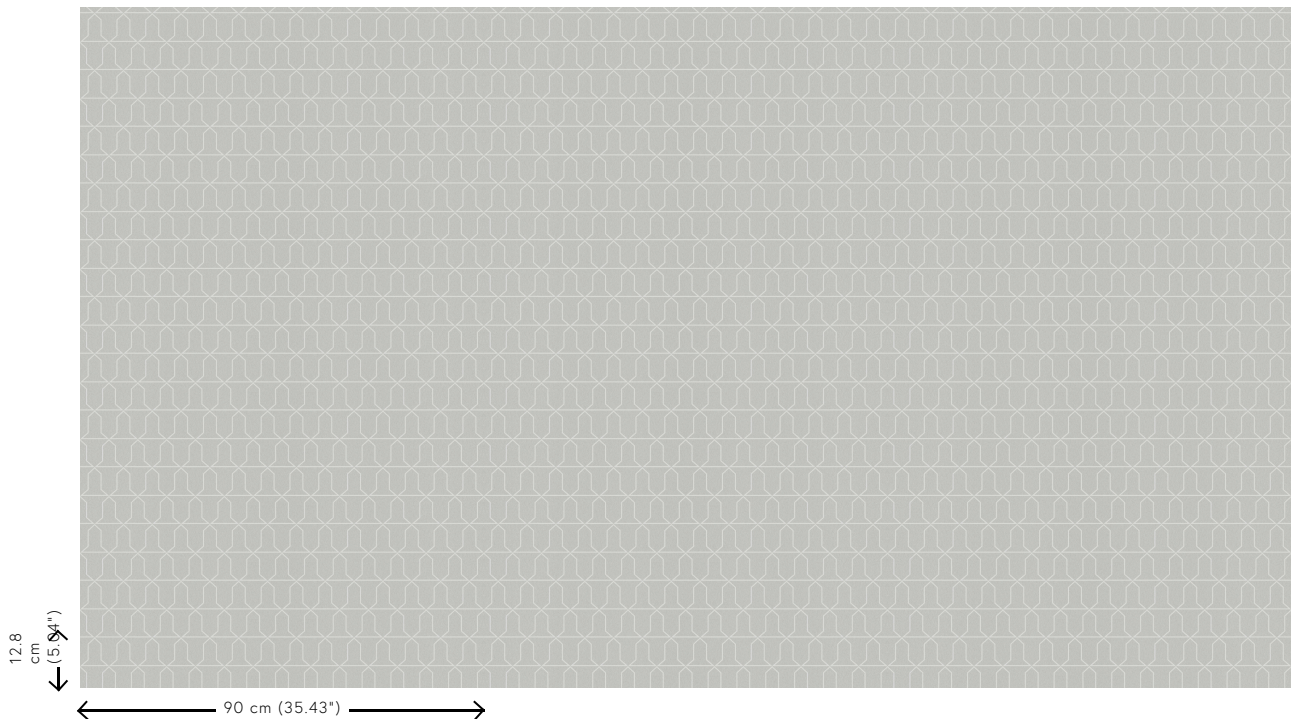


37614



37615

View



More info? [Click here](#)

Order samples, calculate quantities, view instructional videos, download technical information and more:
www.arte-international.com



ARTE®

wallcoverings for the ultimate in refinement