

Bellevue

Collection Marta Cortese



Story behind the collection

Marta Cortese is a versatile Italian architect and textile designer. Her designs are inspired by nature and finished with a generous dose of cheerful imagination. With large, bold prints in striking colours, her creations are true eye-catchers. This collection features various panoramas complemented by floral and animal prints, as well as matching solids.

Technical specifications

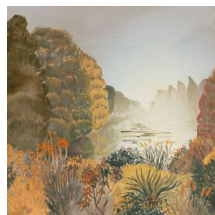
Reference	<u>37861</u>
Composition	Wallpaper on non-woven backing
Dimensions	Panoramic of 318 cm (6 x 53 cm) x 300 cm = 9.54 m ² (125.20" x 118.11" = 103 sq. ft.)
Remark	The pattern is repeatable, allowing several panoramics to be joined together
Adhesive	Arte Clearpro or a good quality dispersion adhesive
How to paste	Paste the wall
Light resistance	Good lightfastness
How to remove	Strippable
Maintenance	Washable



Colourways (2)

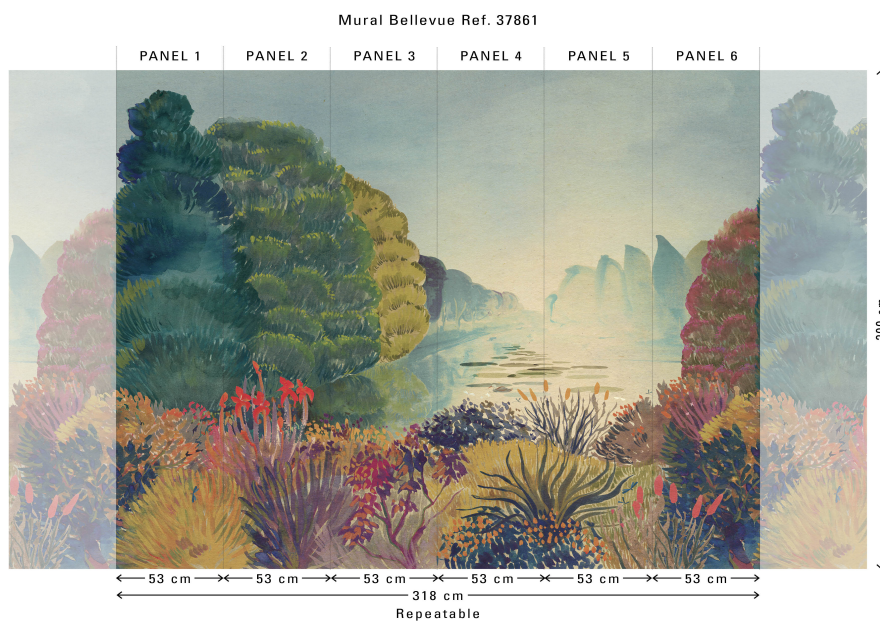


37861



37862

View



More info? [Click here](#)

Order samples, calculate quantities, view instructional videos, download technical information and more:
www.arte-international.com

