



# BANDEAU

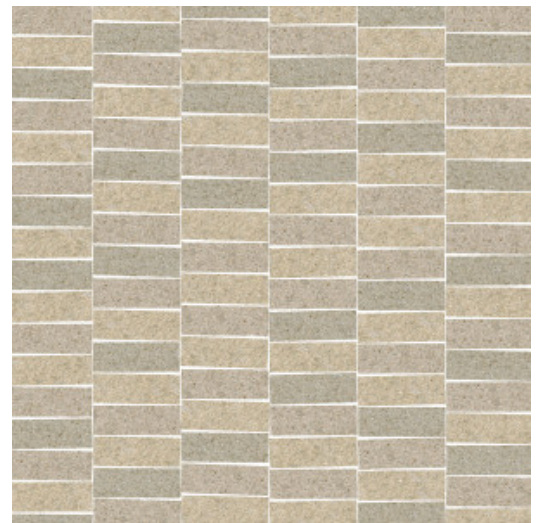
Collection Artisan

## Story behind the collection

This collection is an ode to high-quality, traditional craftsmanship. The wallcovering is made of pure, natural materials, from minerals and grasses to tropical plants.

## Technical specifications

|                   |  |
|-------------------|--|
| Reference         | <u>40340</u>   |
| Product category  | Couture  |
| Composition       | Natural wallcovering on non-woven backing                                |
| Description       | Handmade wallcovering with mica flakes                                   |
| Dimensions        | Width 91.44 cm (36"), sold by the linear metre/yard                      |
| Pattern repeat    | Free match 0 cm (0.00"), respecting the design height of 5.50 cm (2.16") |
| Adhesive          | Arte Clearpro or a good quality dispersion adhesive                      |
| How to paste      | Moisten the product, paste the wall                                      |
| Light resistance  | Good lightfastness   |
| How to remove     | Strippable   |
| Fire retardant EU | B-s1, d0   |
| Fire retardant US | Class A  |
| Maintenance       | Spongeable during hanging (dab away damp glue)                           |



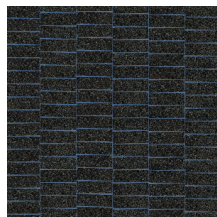
## Colourways (6)



40340



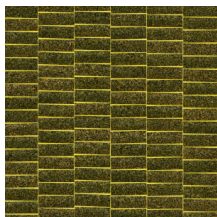
40341



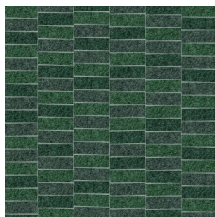
40342



40343



40344



40345

More info? [Click here](#)

Order samples, calculate quantities, view instructional videos, download technical information and more:  
[www.arte-international.com](http://www.arte-international.com)



ARTE®

wallcoverings for the ultimate in refinement