

# BANDEAU

Collection Artisan

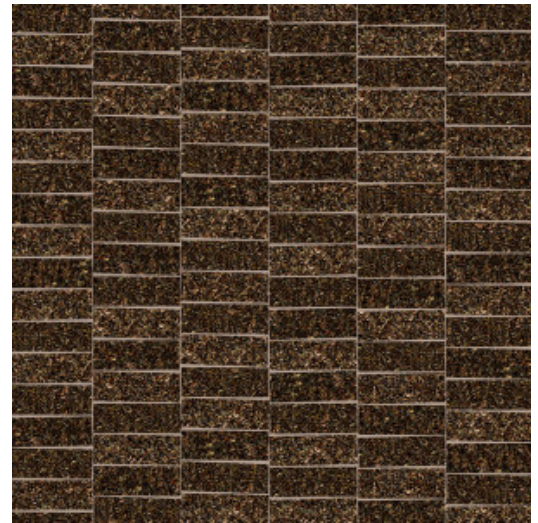


## Story behind the collection

This collection is an ode to high-quality, traditional craftsmanship. The wallcovering is made of pure, natural materials, from minerals and grasses to tropical plants.

## Technical specifications

Reference	<u>40341</u>
Product category	Couture
Composition	Natural wallcovering on non-woven backing
Description	Handmade wallcovering with mica flakes
Dimensions	Width 91.44 cm (36"), sold by the linear metre/yard
Pattern repeat	Free match 0 cm (0.00"), respecting the design height of 5.50 cm (2.16")
Adhesive	Arte Clearpro or a good quality dispersion adhesive
How to paste	Moisten the product, paste the wall
Light resistance	Good lightfastness
How to remove	Strippable
Fire retardant EU	B-s1, d0
Fire retardant US	Class A
Maintenance	Spongeable during hanging (dab away damp glue)



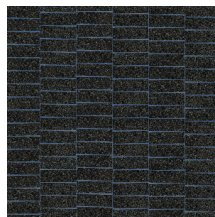
## Colourways (6)



40340



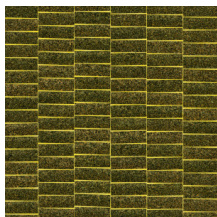
40341



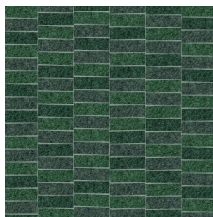
40342



40343



40344



40345

More info? [Click here](#)

Order samples, calculate quantities, view instructional videos, download technical information and more:  
[www.arte-international.com](http://www.arte-international.com)



ARTE®

wallcoverings for the ultimate in refinement