

SHIMMER

Collection Artisan

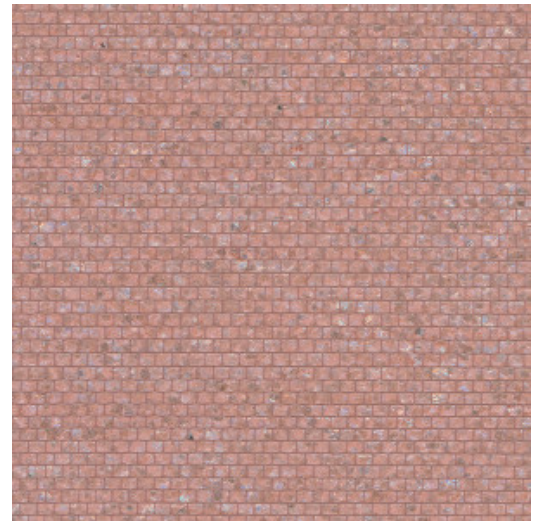


Story behind the collection

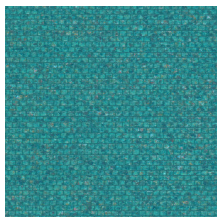
This collection is an ode to high-quality, traditional craftsmanship. The wallcovering is made of pure, natural materials, from minerals and grasses to tropical plants.

Technical specifications

Reference	<u>40354</u> • Petal
Product category	Couture
Composition	Natural wallcovering on non-woven backing
Description	Handmade wallcovering with woven mica
Dimensions	Width 91.44 cm (36.00"), sold by the linear metre/yard
Pattern repeat	Free match 0 cm (0.00")
Adhesive	Arte Clearpro or a good quality dispersion adhesive
How to paste	Moisten the product, paste the wall
Light resistance	Good lightfastness
How to remove	Strippable
Fire retardant EU	B-s1, d0
Fire retardant US	Class A
Maintenance	Spongeable during hanging (dab away damp glue)



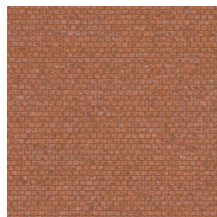
Colourways (6)



40350



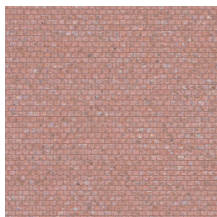
40351



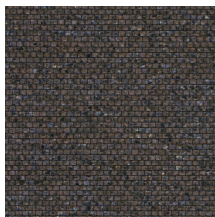
40352



40353



40354



40355

More info? [Click here](#)

Order samples, calculate quantities, view instructional videos, download technical information and more:
www.arte-international.com



ARTE®

wallcoverings for the ultimate in refinement