

FRACTION

Collection Artisan



Story behind the collection

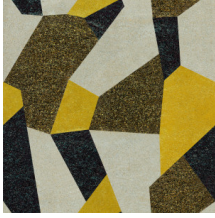
This collection is an ode to high-quality, traditional craftsmanship. The wallcovering is made of pure, natural materials, from minerals and grasses to tropical plants.

Technical specifications

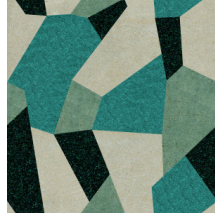
| | |
|-------------------|---|
| Reference | <u>40360</u> • Pollen |
| Product category | Couture |
| Composition | Natural wallcovering on non-woven backing |
| Description | Handmade wallcovering with mica flakes |
| Dimensions | Width 91.44 cm (36"), sold by the linear metre/yard |
| Pattern repeat | Straight match 91.44 cm (36.00") |
| Adhesive | Arte Clearpro or a good quality dispersion adhesive |
| How to paste | Moisten the product, paste the wall |
| Light resistance | Good lightfastness |
| How to remove | Strippable |
| Fire retardant EU | B-s1, d0 |
| Fire retardant US | Class A |
| Maintenance | Spongeable during hanging (dab away damp glue) |



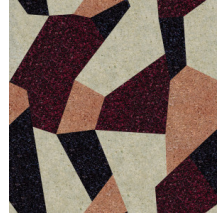
Colourways (3)



40360



40361



40362

View



More info? [Click here](#)

Order samples, calculate quantities, view instructional videos, download technical information and more:
www.arte-international.com



ARTE®

wallcoverings for the ultimate in refinement