

FARINI

Collection Melaky



Story behind the collection

This collection of wallcoverings draws on the diverse nature of Melaky, a region on the island of Madagascar with dry savannah and grasslands as well as dense mangroves. The mulberry tree and raffia, the two materials that inspired this collection, both grow in Madagascar.

Technical specifications

Reference	<u>40720</u> • Parchment
Product category	Couture
Composition	Natural wallcovering on non-woven backing
Description	Hand-woven overlapping strips of raffia create a dynamic line pattern and plenty of relief
Dimensions	Width 91.44 cm (36"), sold by the linear metre/yard
Pattern repeat	Free match 0 cm (0.00")
Remark	Small irregularities and slight colour variations are inherent to natural materials and handcrafted designs. They highlight the authentic beauty of this wallcovering. Vertical & horizontal installation possible.
Adhesive	Arte Clearpro or a good quality dispersion adhesive
How to paste	Moisten the product, paste the wall
Light resistance	Moderate lightfastness
How to remove	Strippable
Maintenance	Spongeable during hanging (dab away damp glue)



Colourways (10)



40720



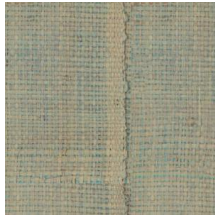
40721



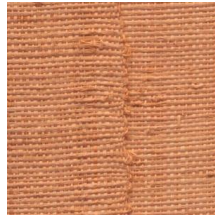
40722



40723



40724



40725



40726



40727



40728



40729

More info? [Click here](#)

Order samples, calculate quantities, view instructional videos, download technical information and more:
www.arte-international.com



ARTE®

wallcoverings for the ultimate in refinement