

FARINI

Collection Melaky



Story behind the collection

This collection of wallcoverings draws on the diverse nature of Melaky, a region on the island of Madagascar with dry savannah and grasslands as well as dense mangroves. The mulberry tree and raffia, the two materials that inspired this collection, both grow in Madagascar.

Technical specifications

| | |
|------------------|---|
| Reference | 40727 • Burgundy |
| Product category | Couture |
| Composition | Natural wallcovering on non-woven backing |
| Description | Hand-woven overlapping strips of raffia create a dynamic line pattern and plenty of relief |
| Dimensions | Width 91.44 cm (36"), sold by the linear metre/yard |
| Pattern repeat | Free match 0 cm (0.00") |
| Remark | Small irregularities and slight colour variations are inherent to natural materials and handcrafted designs. They highlight the authentic beauty of this wallcovering. Vertical & horizontal installation possible. |
| Adhesive | Arte Clearpro or a good quality dispersion adhesive |
| How to paste | Paste the wall and wallcovering |
| Light resistance | Moderate lightfastness |
| How to remove | Strippable |
| Fire rating EU | B-s1, d0 |
| Fire rating US | Class A |
| Maintenance | Spongeable during hanging (dab away damp glue) |



Colourways (10)



40720



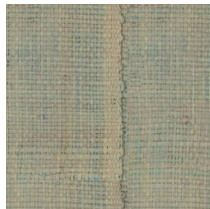
40721



40722



40723



40724



40725



40726



40727



40728



40729

More info? [Click here](#)

Order samples, calculate quantities, view instructional videos, download technical information and more:
www.arte-international.com



ARTE®

wallcoverings for the ultimate in refinement