

MANDRAVA

Collection Melaky

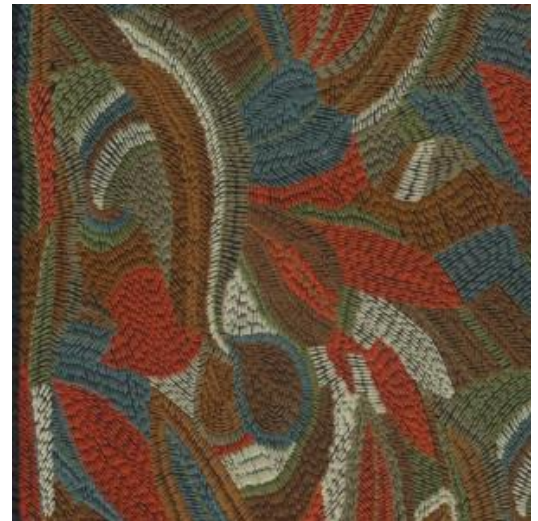


Story behind the collection

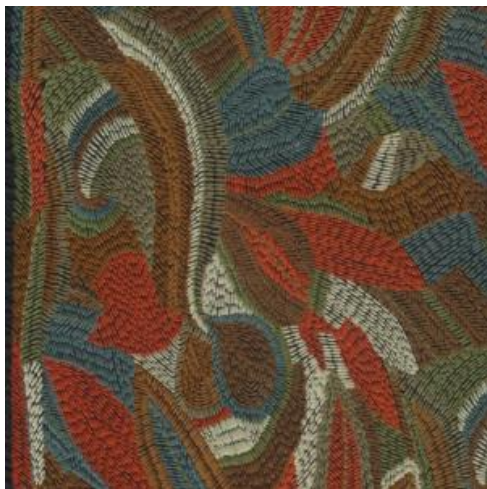
This collection of wallcoverings draws on the diverse nature of Melaky, a region on the island of Madagascar with dry savannah and grasslands as well as dense mangroves. The mulberry tree and raffia, the two materials that inspired this collection, both grow in Madagascar.

Technical specifications

Reference	<u>40760</u> • Folklore
Product category	Couture
Composition	Textile wallcovering on non-woven backing
Description	Richly embroidered floral pattern on textile
Dimensions	Width 127 cm (50"), sold by the linear metre/yard
Pattern repeat	Free match 0 cm (0.00")
Remark	This wallcovering is handmade. The embroidery on both sides is irregular, creating the black vertical line, the width of which may vary slightly. This is part of the design.
Adhesive	Arte Clearpro or a good quality dispersion adhesive
How to paste	Paste the wall
Light resistance	Good lightfastness
How to remove	Strippable
Maintenance	Spongeable during hanging (dab away damp glue)



Colourways (2)



40760



40761

More info? [Click here](#)

Order samples, calculate quantities, view instructional videos, download technical information and more:
www.arte-international.com



ARTE®

wallcoverings for the ultimate in refinement