



# UNO

Collection All Naturals

## Story behind the collection

Arte has always had a predilection for unusual materials, with the brand's designers creating superb wallcoverings from many unique materials they find around the world. Designs with natural materials are a mainstay of its collections. Raffia, sisal, mica and banana bark are just a few of the stunning natural products Arte uses for its amazingly diverse range of natural wallcoverings. This collection is a homage to the beauty of these products.

## Technical specifications

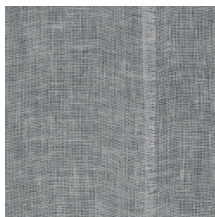
Reference	<u>46555A</u> • Clay
Product category	Couture
Composition	Natural wallcovering on non-woven backing
Description	Wallcovering made of handwoven and coloured jute
Dimensions	Width 91.44 cm (36.00"), sold by the linear metre/yard
Pattern repeat	Free match 0 cm (0.00")
Remark	The jute obtains an excellent colour fastness thanks to a special treatment
Adhesive	Arte Clearpro or a good quality dispersion adhesive
How to paste	Paste the wall
Light resistance	Good lightfastness
How to remove	Strippable
Fire retardant EU	B-s1, d0
Fire retardant US	Class A
Maintenance	Spongeable during hanging (dab away damp glue)



## Colourways (7)



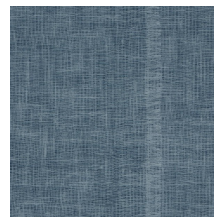
46550A



46551A



46552A



46554A



46555A



46556A



46561A

More info? [Click here](#)

Order samples, calculate quantities, view instructional videos, download technical information and more:  
[www.arte-international.com](http://www.arte-international.com)



ARTE®

wallcoverings for the ultimate in refinement