

# ALIGN

Collection Revera

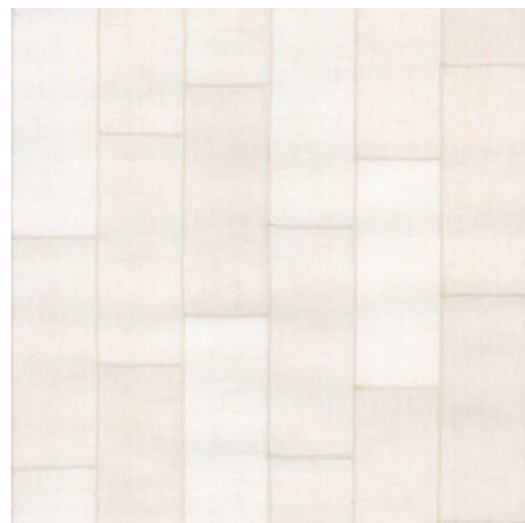


## Story behind the collection

Fashion and interior design are closely related. Both style worlds respond to the changing times and influence each other in something of a pendulum movement. Influences of interior and design brands appear in the fashion world and vice versa. With Revera, we highlight those close ties: classic textile patterns are given a modern twist with foil, flock or real textile in this new collection of wallcoverings.

## Technical specifications

Reference	<u>47500</u> • Bone
Product category	Couture
Composition	Natural wallcovering on non-woven backing
Description	Wallcovering made of handwoven and coloured jute
Dimensions	Width 91.44 cm (36.00"), sold by the linear metre/yard
Pattern repeat	Free match 0 cm (0.00")
Remark	The pattern Align is a patchwork of real jute, that obtains an excellent colour fastness thanks to a special treatment
Adhesive	Arte Clearpro or a good quality dispersion adhesive
How to paste	Moisten the product, paste the wall
Light resistance	Good lightfastness
How to remove	Strippable
Fire retardant EU	B-s1, d0
Fire retardant US	Class A
Maintenance	Spongeable during hanging (dab away damp glue)



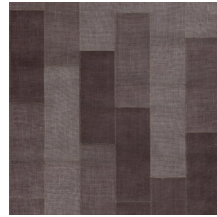
## Colourways (5)



47500



47501



47502



47503



47504

More info? [Click here](#)

Order samples, calculate quantities, view instructional videos, download technical information and more:  
[www.arte-international.com](http://www.arte-international.com)



ARTE®

wallcoverings for the ultimate in refinement