

# CONTOUR

Collection Revera

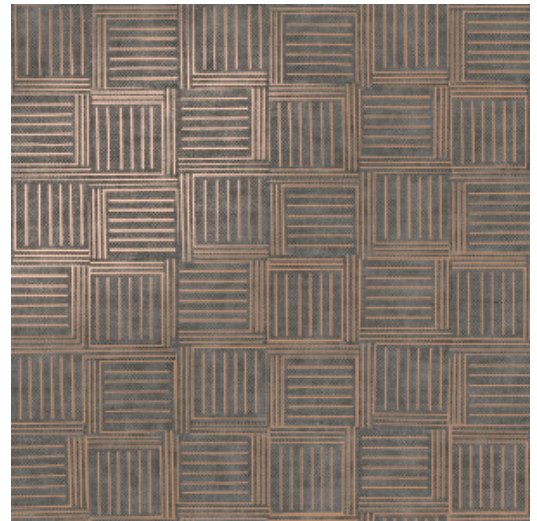


## Story behind the collection

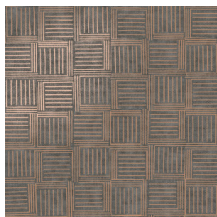
Fashion and interior design are closely related. Both style worlds respond to the changing times and influence each other in something of a pendulum movement. Influences of interior and design brands appear in the fashion world and vice versa. With Revera, we highlight those close ties: classic textile patterns are given a modern twist with foil, flock or real textile in this new collection of wallcoverings.

## Technical specifications

|                   |   |
|-------------------|---|
| Reference         | <u>47530</u>  |
| Product category  | Exquisite   |
| Composition       | Non-woven wallcovering  |
| Description       | Non-woven wallcovering inspired by textures and patterns from the textile industry, combined with a patchwork of jute |
| Dimensions        | Width 90 cm (35.43"), sold by the linear metre/yard   |
| Pattern repeat    | Straight match 21.33 cm (8.40")   |
| Adhesive          | Arte Clearpro or a good quality dispersion adhesive   |
| How to paste      | Paste the wall  |
| Light resistance  | Good lightfastness  |
| How to remove     | Strippable  |
| Fire retardant EU | B-s1, d0  |
| Fire retardant US | Class A   |
| Maintenance       | Washable  |



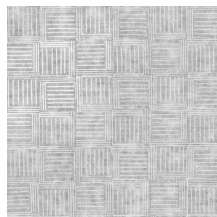
## Colourways (5)



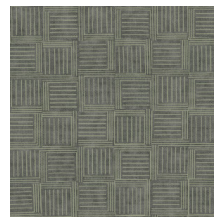
47530



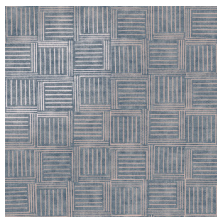
47531



47532



47533

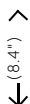


47534

## View



21.33  
cm  
(8.4")



90 cm (35.43")

More info? [Click here](#)

Order samples, calculate quantities, view instructional videos, download technical information and more:  
[www.arte-international.com](http://www.arte-international.com)



ARTE®

wallcoverings for the ultimate in refinement