



PULSE

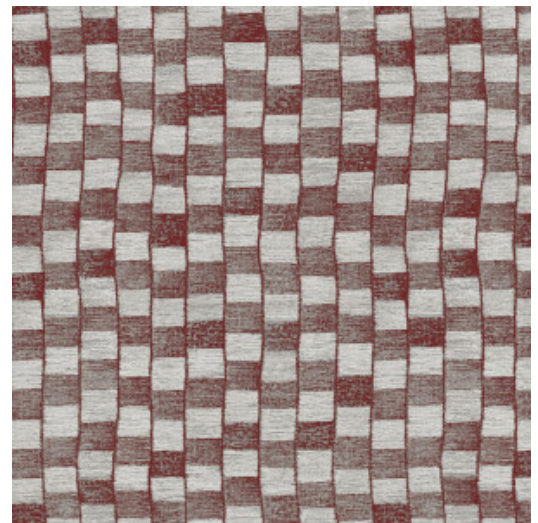
Collection Revera

Story behind the collection

Fashion and interior design are closely related. Both style worlds respond to the changing times and influence each other in something of a pendulum movement. Influences of interior and design brands appear in the fashion world and vice versa. With Revera, we highlight those close ties: classic textile patterns are given a modern twist with foil, flock or real textile in this new collection of wallcoverings.

Technical specifications

Reference	<u>47543</u>
Product category	Exquisite
Composition	Non-woven wallcovering
Description	Non-woven wallcovering inspired by textures and patterns from the textile industry, combined with a patchwork of jute
Dimensions	Width 90 cm (35.43"), sold by the linear metre/yard
Pattern repeat	Straight match 64 cm (25.20")
Adhesive	Arte Clearpro or a good quality dispersion adhesive
How to paste	Paste the wall
Light resistance	Good lightfastness
How to remove	Strippable
Fire retardant EU	B-s1, d0
Fire retardant US	Class A
Maintenance	Spongeable during hanging (dab away damp glue)



Colourways (4)



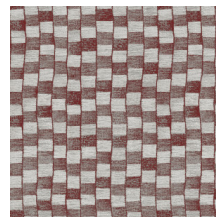
47540



47541

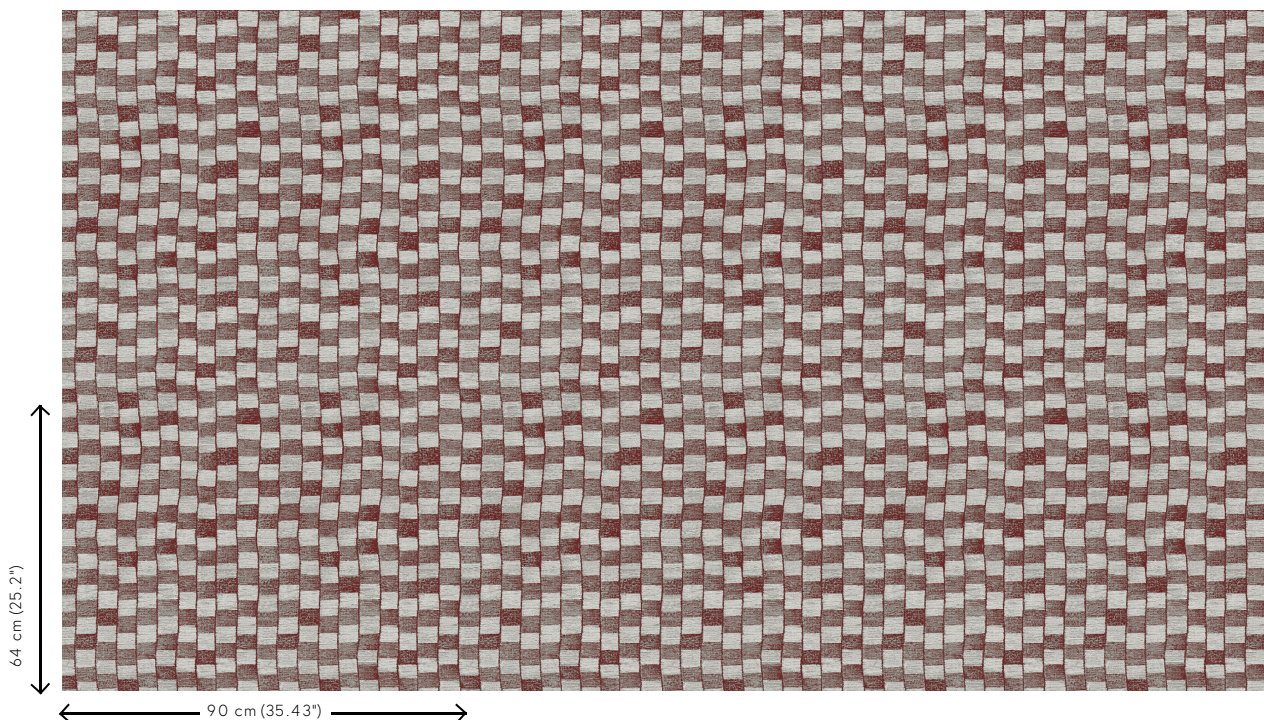


47542



47543

View



More info? [Click here](#)

Order samples, calculate quantities, view instructional videos, download technical information and more:
www.arte-international.com



ARTE®

wallcoverings for the ultimate in refinement