



PATCH

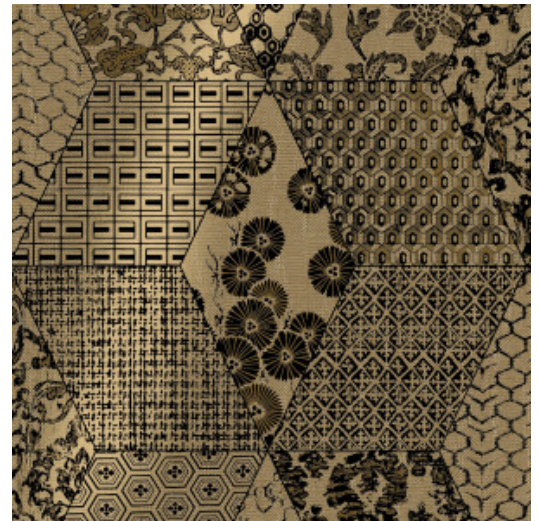
Collection Revera

Story behind the collection

Fashion and interior design are closely related. Both style worlds respond to the changing times and influence each other in something of a pendulum movement. Influences of interior and design brands appear in the fashion world and vice versa. With Revera, we highlight those close ties: classic textile patterns are given a modern twist with foil, flock or real textile in this new collection of wallcoverings.

Technical specifications

| | |
|-------------------|---|
| Reference | <u>47560</u> |
| Product category | Exquisite |
| Composition | Non-woven wallcovering |
| Description | Non-woven wallcovering inspired by textures and patterns from the textile industry, combined with a patchwork of jute |
| Dimensions | Width 90 cm (35.43"), sold by the linear metre/yard |
| Pattern repeat | Drop match 128/64 cm (50.39"/25.20") |
| Adhesive | Arte Clearpro or a good quality dispersion adhesive |
| How to paste | Paste the wall |
| Light resistance | Good lightfastness |
| How to remove | Strippable |
| Fire retardant EU | B-s1, d0 |
| Fire retardant US | Class A |
| Maintenance | Washable |



Colourways (3)



47560



47561



47562

View



128 cm (50.39")

90 cm (35.43")

More info? [Click here](#)

Order samples, calculate quantities, view instructional videos, download technical information and more:
www.arte-international.com



ARTE®

wallcoverings for the ultimate in refinement