

# CRAFT


Collection Cantala



## Story behind the collection

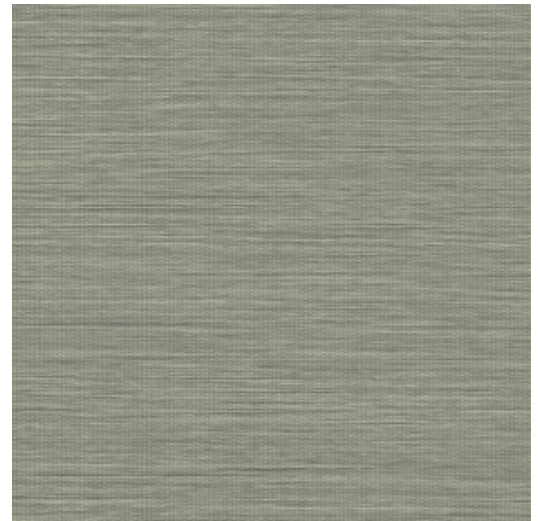
This collection honours the pure beauty of natural materials like sisal, raffia and paper. The authentic, graceful look of these products is the key feature. The collection owes its name to the Agave cantala, an exotic plant of the Agave family. Sisal fibres are derived from its long, slender leaves which are often up to two metres long. We often see this sisal used in fashion and interior design.

## Technical specifications

Reference	<u>48511</u>
Product category	Exquisite
Composition	Non-woven wallcovering
Description	Wallcovering with the extremely realistic look of natural sisal. It is guaranteed to always reproduce an extremely even and restful weave, without detracting from the sophisticated appearance of woven sisal
Dimensions	Width 90 cm (35.43"), sold by the linear metre/yard
Pattern repeat	Free match 0 cm (0.00")
Remark	This wallcovering gives a very natural result. The panelling effect – characteristic of authentic sisal wallcovering – is balanced nicely by means of the controlled production process
Adhesive	Arte Clearpro or a good quality dispersion adhesive
How to paste	Paste the wall
Light resistance	Good lightfastness
How to remove	Strippable
Fire retardant EU	B-s1, d0
Fire retardant US	Class A
Maintenance	Washable
IMO Certified	



0493/22



## Colourways (21)



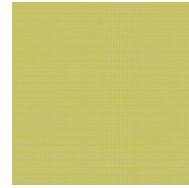
48500



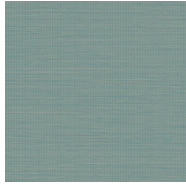
48501



48502



48503



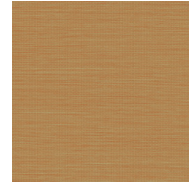
48504



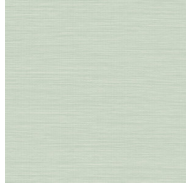
48505



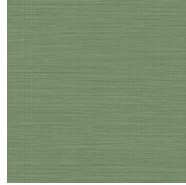
48506



48507



48508



48509



48510



48511



48512



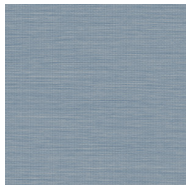
48513



48514



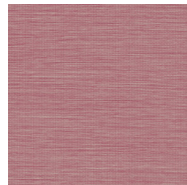
48515



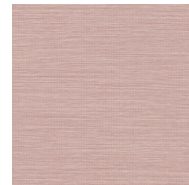
48516



48517



48518



48519



48520

More info? [Click here](#)

Order samples, calculate quantities, view instructional videos, download technical information and more:  
[www.arte-international.com](http://www.arte-international.com)



ARTE®

wallcoverings for the ultimate in refinement