



# CRAFT

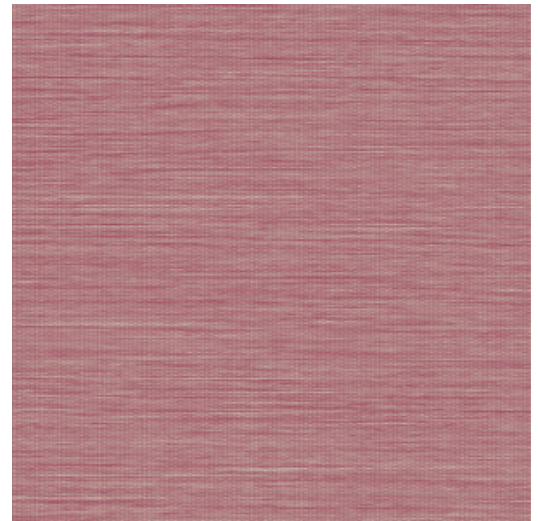
Collection Cantala

## Story behind the collection

This collection honours the pure beauty of natural materials like sisal, raffia and paper. The authentic, graceful look of these products is the key feature. The collection owes its name to the Agave cantala, an exotic plant of the Agave family. Sisal fibres are derived from its long, slender leaves which are often up to two metres long. We often see this sisal used in fashion and interior design.

## Technical specifications

|                   |  |
|-------------------|--|
| Reference         | <u>48 518</u> • Framboise  |
| Product category  | Exquisite  |
| Composition       | Non-woven wallcovering   |
| Description       | Wallcovering with the extremely realistic look of natural sisal. It is guaranteed to always reproduce an extremely even and restful weave, without detracting from the sophisticated appearance of woven sisal |
| Dimensions        | Width 90 cm (35.43"), sold by the linear metre/yard  |
| Pattern repeat    | Free match 0 cm (0.00")  |
| Remark            | This wallcovering gives a very natural result. The panelling effect – characteristic of authentic sisal wallcovering – is balanced nicely by means of the controlled production process                        |
| Adhesive          | Arte Clearpro or a good quality dispersion adhesive  |
| How to paste      | Paste the wall   |
| Light resistance  | Good lightfastness   |
| How to remove     | Strippable   |
| Fire retardant EU | B-s1, d0   |
| Fire retardant US | Class A  |
| Maintenance       | Washable   |
| IMO Certified     |  |



## Colourways (21)



More info? [Click here](#)

Order samples, calculate quantities, view instructional videos, download technical information and more:  
[www.arte-international.com](http://www.arte-international.com)



ARTE®

wallcoverings for the ultimate in refinement