

COMBO


Collection Cantala

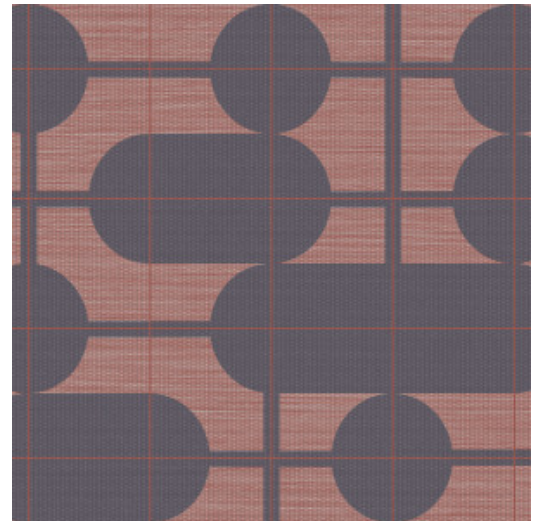


Story behind the collection

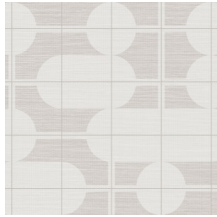
This collection honours the pure beauty of natural materials like sisal, raffia and paper. The authentic, graceful look of these products is the key feature. The collection owes its name to the Agave cantala, an exotic plant of the Agave family. Sisal fibres are derived from its long, slender leaves which are often up to two metres long. We often see this sisal used in fashion and interior design.

Technical specifications

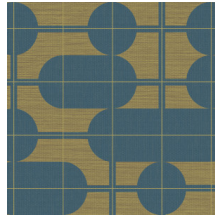
Reference	<u>48534</u>
Product category	Exquisite
Composition	Non-woven wallcovering
Description	Wallcovering with the timeless look of authentic sisal. The design is inspired by the trend of furniture and decoration with elegant, glowing lines and pronounced round shapes
Dimensions	Width 90 cm (35.43"), sold by the linear metre/yard
Pattern repeat	Drop match 64/32 cm (25.20"/12.60")
Adhesive	Arte Clearpro or a good quality dispersion adhesive
How to paste	Paste the wall
Light resistance	Good lightfastness
How to remove	Strippable
Fire retardant EU	B-s1, d0
Fire retardant US	Class A
Maintenance	Washable
IMO Certified	



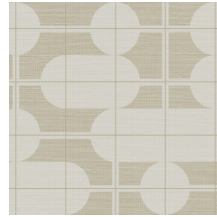
Colourways (5)



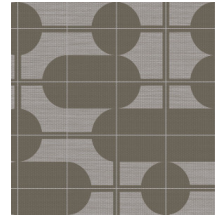
48530



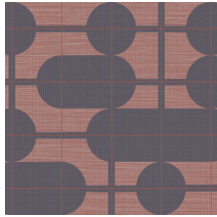
48531



48532

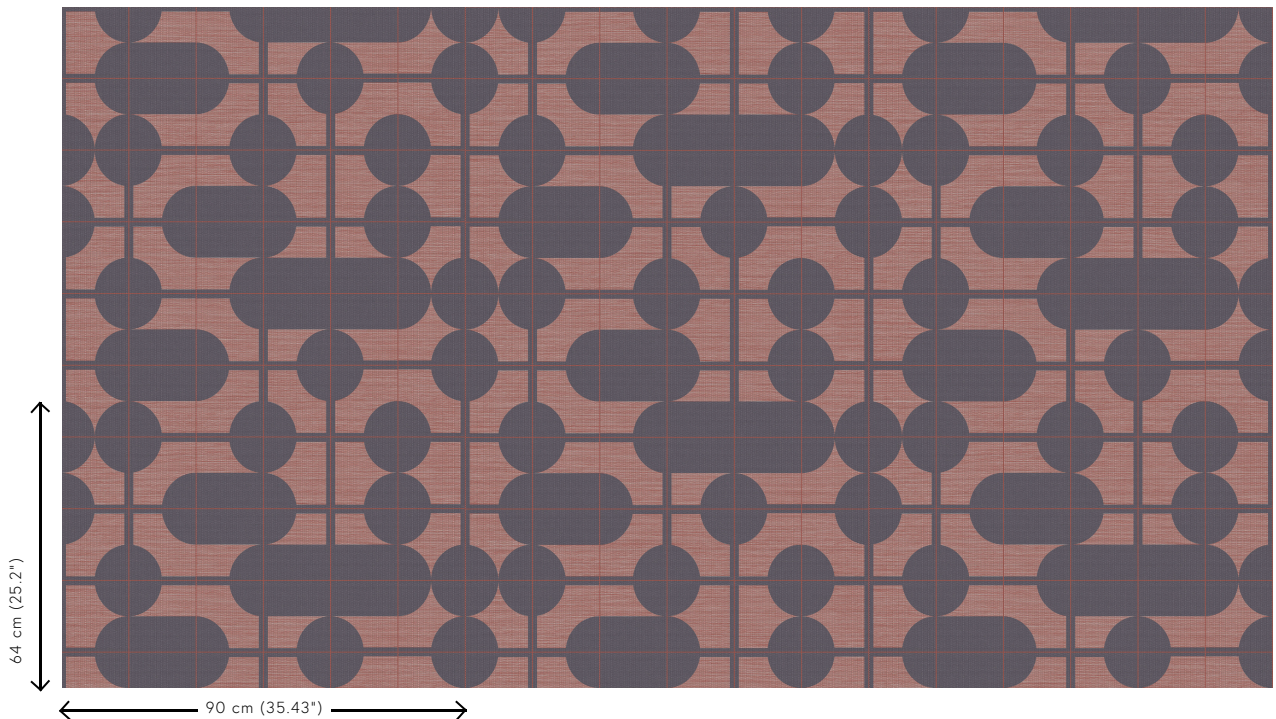


48533



48534

View



More info? [Click here](#)

Order samples, calculate quantities, view instructional videos, download technical information and more:
www.arte-international.com



ARTE®

wallcoverings for the ultimate in refinement