



PAPYRUS

Collection Cantala

Story behind the collection

This collection honours the pure beauty of natural materials like sisal, raffia and paper. The authentic, graceful look of these products is the key feature. The collection owes its name to the Agave cantala, an exotic plant of the Agave family. Sisal fibres are derived from its long, slender leaves which are often up to two metres long. We often see this sisal used in fashion and interior design.

Technical specifications

Reference	<u>48550</u>
Product category	Couture
Composition	Natural wallcovering on non-woven backing
Description	Traditionally-made wallcovering with hand-folded paper
Dimensions	Width 91.44 cm (36"), sold by the linear metre/yard
Pattern repeat	Free match 0 cm (0.00")
Adhesive	Arte Clearpro or a good quality dispersion adhesive
How to paste	Moisten the product, paste the wall
Light resistance	Good lightfastness
How to remove	Strippable
Fire retardant EU	B-s1, d0
Fire retardant US	Class A
Maintenance	Spongeable during hanging (dab away damp glue)



Colourways (4)



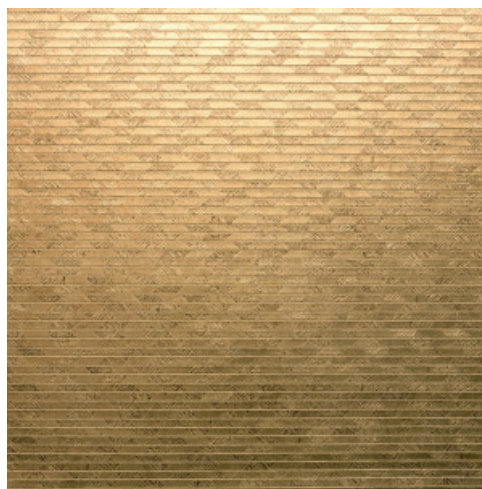
48550



48551



48552



48553

More info? [Click here](#)

Order samples, calculate quantities, view instructional videos, download technical information and more:
www.arte-international.com



ARTE®

wallcoverings for the ultimate in refinement