



# PAPYRUS

Collection All Naturals

## Story behind the collection

Arte has always had a predilection for unusual materials, with the brand's designers creating superb wallcoverings from many unique materials they find around the world. Designs with natural materials are a mainstay of its collections. Raffia, sisal, mica and banana bark are just a few of the stunning natural products Arte uses for its amazingly diverse range of natural wallcoverings. This collection is a homage to the beauty of these products.

## Technical specifications

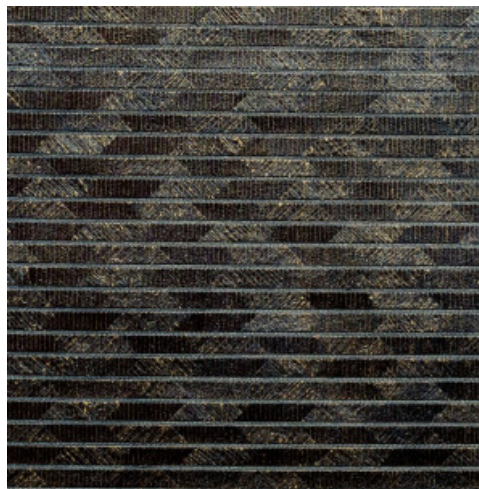
|                   |  |
|-------------------|--|
| Reference         | <b>48550A</b> • Mono                                   |
| Product category  | Couture  |
| Composition       | Natural wallcovering on non-woven backing              |
| Description       | Traditionally-made wallcovering with hand-folded paper |
| Dimensions        | Width 91.44 cm (36.00"), sold by the linear metre/yard |
| Pattern repeat    | Free match 0 cm (0.00")                                |
| Adhesive          | Arte Clearpro or a good quality dispersion adhesive    |
| How to paste      | Moisten the product, paste the wall                    |
| Light resistance  | Good lightfastness                                     |
| How to remove     | Strippable   |
| Fire retardant EU | B-s1, d0   |
| Fire retardant US | Class A  |
| Maintenance       | Spongeable during hanging (dab away damp glue)         |



### Colourways (3)



48550A



48551A



48553A

More info? [Click here](#)

Order samples, calculate quantities, view instructional videos, download technical information and more:  
[www.arte-international.com](http://www.arte-international.com)



ARTE®

wallcoverings for the ultimate in refinement