



# RAPHIA

Collection Cantala

## Story behind the collection

This collection honours the pure beauty of natural materials like sisal, raffia and paper. The authentic, graceful look of these products is the key feature. The collection owes its name to the Agave cantala, an exotic plant of the Agave family. Sisal fibres are derived from its long, slender leaves which are often up to two metres long. We often see this sisal used in fashion and interior design.

## Technical specifications

|                   |   |
|-------------------|---|
| Reference         | <u>48560</u> • Camouflage                                 |
| Product category  | Couture   |
| Composition       | Natural wallcovering on non-woven backing                 |
| Description       | A combination of irregularly woven raffia and rough yarns |
| Dimensions        | Width 91.44 cm (36.00"), sold by the linear metre/yard    |
| Pattern repeat    | Free match 0 cm (0.00")                                   |
| Adhesive          | Arte Clearpro or a good quality dispersion adhesive       |
| How to paste      | Moisten the product, paste the wall                       |
| Light resistance  | Good lightfastness  |
| How to remove     | Strippable  |
| Fire retardant EU | B-s1, d0  |
| Fire retardant US | Class A   |
| Maintenance       | Spongeable during hanging (dab away damp glue)            |



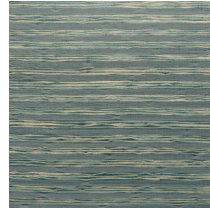
## Colourways (5)



48560



48561



48562



48563



48564

More info? [Click here](#)

Order samples, calculate quantities, view instructional videos, download technical information and more:  
[www.arte-international.com](http://www.arte-international.com)



---

ARTE®

wallcoverings for the ultimate in refinement