

# CHASU

Collection Osmanthus



## Story behind the collection

This collection exudes refinement and luxury, not only through the sophisticated embroidery technique but also due to the use of natural materials such as sisal, cotton and hemp. The aesthetic aspect and purity of nature are in perfect balance. The materials, designs and colours in this collection refer to the Far East.

## Technical specifications

Reference	<a href="#">54513</a> • Lemony Teal
Product category	Couture
Composition	Natural wallcovering on non-woven backing
Description	Abstract herringbone pattern embroidered onto a sisal background using shiny textile threads
Dimensions	Rolls of 3.20 m x 0.86 m = 2.75 m <sup>2</sup> (3.50 yds x 33.86" = 29.60 sq. ft.)
Pattern repeat	Straight match 80 cm (31.50")
Adhesive	Arte Clearpro or a good quality dispersion adhesive
How to paste	Moisten the product, paste the wall and paste the wallcovering
Light resistance	Moderate lightfastness
How to remove	Strippable
Fire rating EU	B-s1, d0
Fire rating US	Class A
Maintenance	Spongeable during hanging (dab away damp glue)



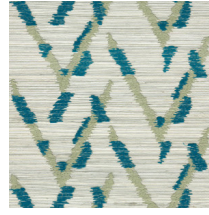
## Colourways (4)



54510



54511

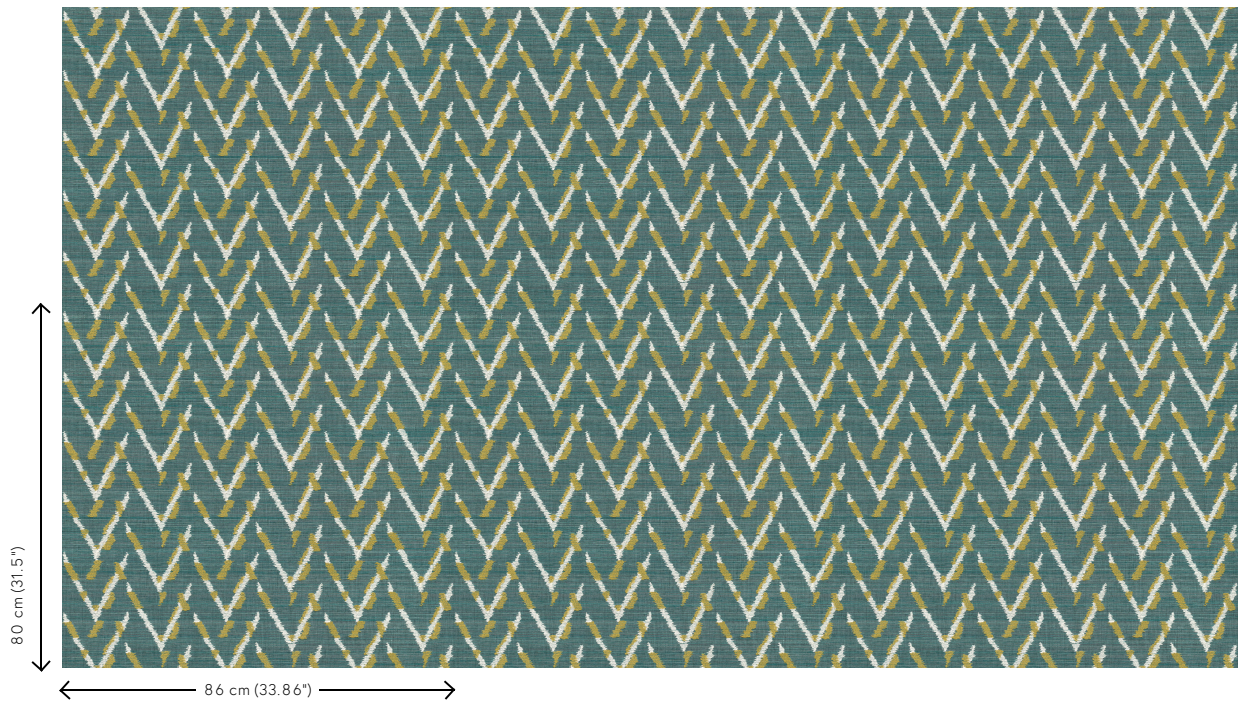


54512



54513

## View



More info? [Click here](#)

Order samples, calculate quantities, view instructional videos, download technical information and more:  
[www.arte-international.com](http://www.arte-international.com)



ARTE®

wallcoverings for the ultimate in refinement