



# TATAMI

Collection Osmanthus

## Story behind the collection

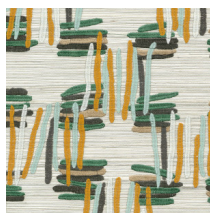
This collection exudes refinement and luxury, not only through the sophisticated embroidery technique but also due to the use of natural materials such as sisal, cotton and hemp. The aesthetic aspect and purity of nature are in perfect balance. The materials, designs and colours in this collection refer to the Far East.

## Technical specifications

Reference	<u>54520</u> • Green Almond
Product category	Couture
Composition	Natural wallcovering on non-woven backing
Description	Shiny geometric embroidery on a sisal background
Dimensions	Rolls of 3.20 m x 0.86 m = 2.75 m <sup>2</sup> (3.50 yds x 33.86" = 29.60 sq.ft.)
Pattern repeat	Straight match 40 cm (15.75")
Adhesive	Arte Clearpro or a good quality dispersion adhesive
How to paste	Moisten the product, paste the wall and paste the wallcovering
Light resistance	Moderate lightfastness
How to remove	Strippable
Fire retardant EU	B-s1, d0
Fire retardant US	Class A
Maintenance	Spongeable during hanging (dab away damp glue)



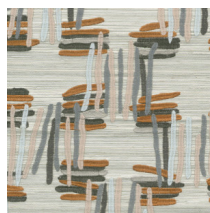
## Colourways (5)



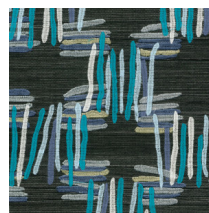
54520



54521



54522



54523



54524

## View



More info? [Click here](#)

Order samples, calculate quantities, view instructional videos, download technical information and more:  
[www.arte-international.com](http://www.arte-international.com)



ARTE®

wallcoverings for the ultimate in refinement