

KUDZU

Collection Osmanthus



Story behind the collection

This collection exudes refinement and luxury, not only through the sophisticated embroidery technique but also due to the use of natural materials such as sisal, cotton and hemp. The aesthetic aspect and purity of nature are in perfect balance. The materials, designs and colours in this collection refer to the Far East.

Technical specifications

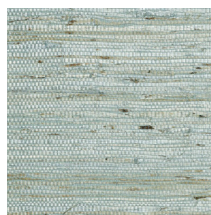
Reference	<u>54533</u> - Ash
Product category	Exquisite
Composition	Natural wallcovering on non-woven backing
Description	Made of the fibres of the common climbing plant kudzu
Dimensions	Width 91.44 cm (36.00"), sold by the linear metre/yard
Pattern repeat	Free match 0 cm (0.00")
Adhesive	Arte Clearpro or a good quality dispersion adhesive
How to paste	Paste the wall
Light resistance	Moderate lightfastness
How to remove	Strippable
Fire rating EU	B-s1, d0
Fire rating US	Class A
Maintenance	Spongeable during hanging (dab away damp glue)



Colourways (12)



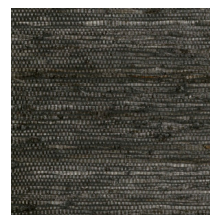
54530



54531



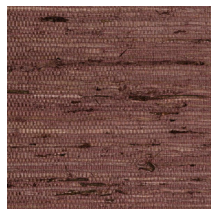
54532



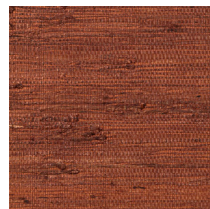
54533



54534



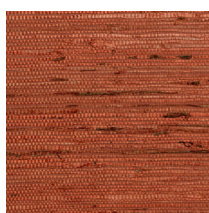
54535



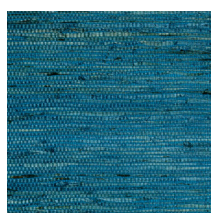
54536



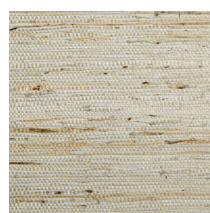
54537



54538



54539



54540



54541

More info? [Click here](#)

Order samples, calculate quantities, view instructional videos, download technical information and more:
www.arte-international.com



ARTE®

wallcoverings for the ultimate in refinement