



LIN

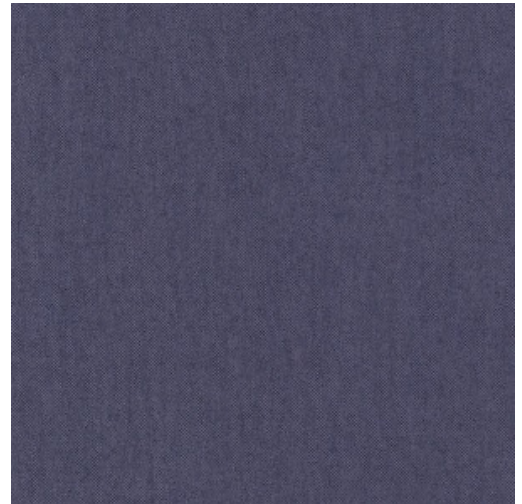
Collection Flamant Suite V - Mystic Impressions

Story behind the collection

For this collection we immersed ourselves in archives and antique books in search of 19th century floral patterns. Flower and leaf patterns were immensely popular back then and they were often used to decorate everyday objects, especially in the higher social circles. This collection is based on two centuries-old patterns which have each been given a radically new reinterpretation. The first pattern is an informally elegant interplay of flowers and leaves, while the second pattern is somewhat statelier. Both prints seem to have been stippled onto a linen structure and combine perfectly with the plain Lin.

Technical specifications

| | |
|-------------------|--|
| Reference | <u>59300</u> • Nocturne |
| Product category | Refined |
| Composition | Wallpaper on non-woven backing |
| Dimensions | Rolls of 8.50 m x 0.70 m = 6 m ² (9.30 yds x 27.56" = 64 sq. ft.) |
| Pattern repeat | Free match 0 cm (0.00") |
| Adhesive | Adhesive for non-woven wallcovering such as Arte Clearpro |
| How to paste | Paste the wall |
| Light resistance | Good lightfastness |
| How to remove | Strippable |
| Fire retardant EU | B-s1, d0 |
| Fire retardant US | Class A |
| Maintenance | Extra-washable |
| IMO Certified | |



Colourways (20)



59300



59301



59302



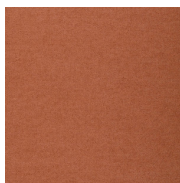
59303



59304



59306



59307



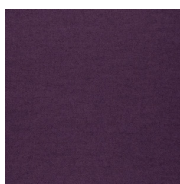
59308



59310



59311



59312



59313



59314



59315



59317



59318



59319



59320



59321



59322

More info? [Click here](#)

Order samples, calculate quantities, view instructional videos, download technical information and more:
www.arte-international.com



ARTE®

wallcoverings for the ultimate in refinement