

# DOUDEVILLE

Collection Essentials Washed Linen

---



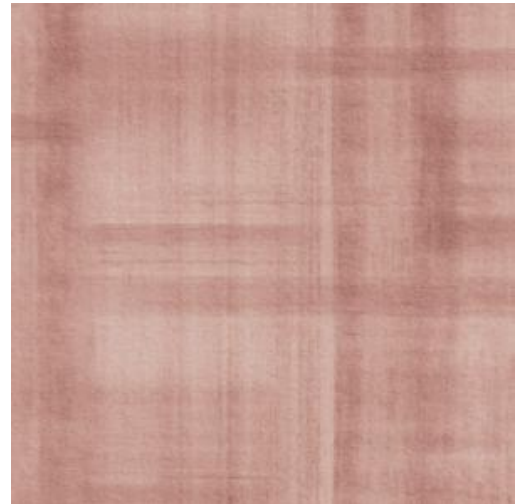
## Story behind the collection

This Essentials collection rethinks linen, a versatile textile that has proven its worth in our interiors over time. The versatile plain wallcovering is easy to combine with the subtle panoramic Doudeville.

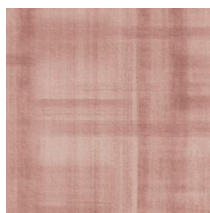
---

## Technical specifications

Reference	<u>59590</u> • Mauve
Product category	Exquisite
Composition	Textile wallcovering on non-woven backing
Description	Inspired by the flax fields of Doudeville, where flax stalks create a striking striped landscape after harvest
Dimensions	Panoramic of 390 cm x 300 cm = 11.70 m <sup>2</sup> (153.54" x 118.11" = 126 sq. ft.)
Remark	The pattern is repeatable, allowing several panoramics to be joined together.
Adhesive	Arte Clearpro or a good quality dispersion adhesive
How to paste	Paste the wall
Light resistance	Good lightfastness
How to remove	Strippable
Fire retardant EU	B-s1, d0
Fire retardant US	Class A
Maintenance	Washable



## Colourways (3)



59590

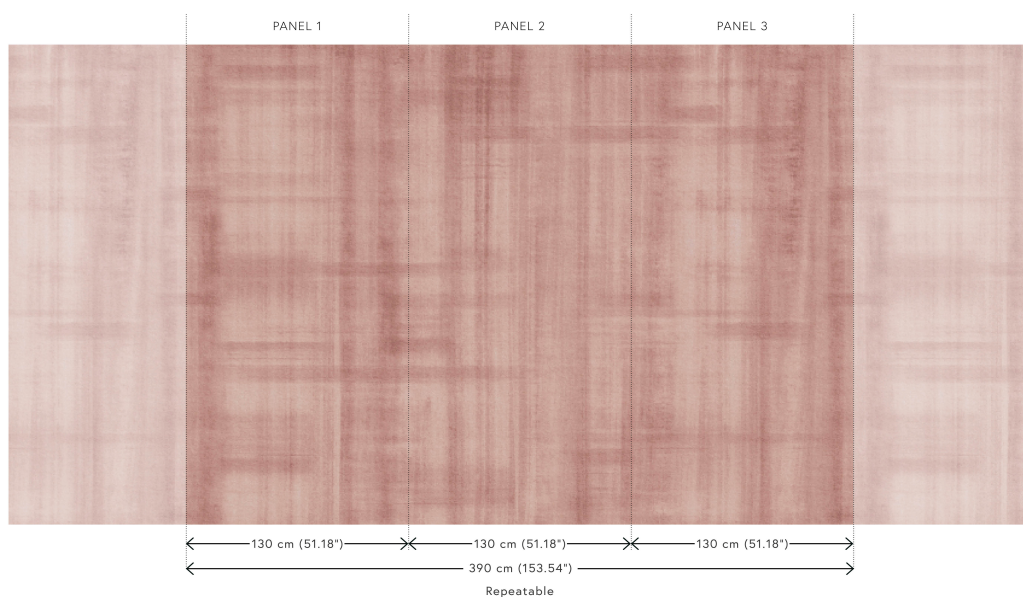


59591



59592

## View



More info? [Click here](#)

Order samples, calculate quantities, view instructional videos, download technical information and more:  
[www.arte-international.com](http://www.arte-international.com)



ARTE®

wallcoverings for the ultimate in refinement