



BOTANIC

Collection Manila

Story behind the collection

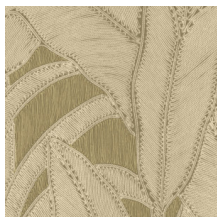
Floral patterns in combination with organic shapes are the common thread throughout the Manila collection.

Technical specifications

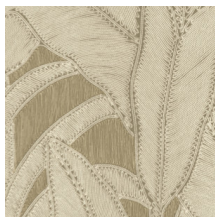
| | |
|-------------------|--|
| Reference | <u>64501</u> • Linen |
| Product category | Refined |
| Composition | Vinyl wallpaper on paper backing |
| Description | Inspired by meticulously inlaid threads in a floral pattern |
| Dimensions | Rolls of 10.05 m x 0.70 m = 7 m ² (11 yds x 27.56" = 75 sq. ft.) |
| Pattern repeat | Straight match 90 cm (35.43") |
| Adhesive | Arte Clearpro or a good quality dispersion adhesive |
| How to paste | Method 1: paste the wall and moisten the wallcovering. Method 2: paste the wallcovering. |
| Light resistance | Good lightfastness |
| How to remove | Peelable |
| Fire retardant EU | B-s2, d0 |
| Fire retardant US | Class A |
| Maintenance | Extra-washable |



Colourways (6)



64500



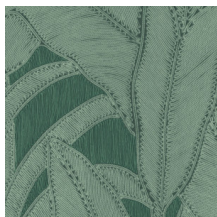
64501



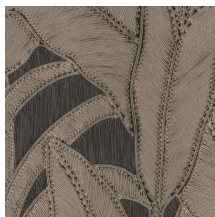
64502



64503



64504



64505

View



More info? [Click here](#)

Order samples, calculate quantities, view instructional videos, download technical information and more:
www.arte-international.com



ARTE®

wallcoverings for the ultimate in refinement