



# EDGE

## Collection Manila

### Story behind the collection

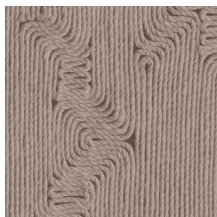
Floral patterns in combination with organic shapes are the common thread throughout the Manila collection.

### Technical specifications

Reference	<u>64521</u> • Dunes
Product category	Refined
Composition	Vinyl wallpaper on paper backing
Description	Inspired by meticulously inlaid threads in an organic pattern
Dimensions	Rolls of 10.05 m x 0.70 m = 7 m <sup>2</sup> (11 yds x 27.56" = 75 sq. ft.)
Pattern repeat	Straight match 90 cm (35.43")
Adhesive	Arte Clearpro or a good quality dispersion adhesive
How to paste	Method 1: paste the wall and moisten the wallcovering. Method 2: paste the wallcovering.
Light resistance	Good lightfastness
How to remove	Peelable
Fire retardant EU	B-s2, d0
Fire retardant US	Class A
Maintenance	Extra-washable



## Colourways (6)



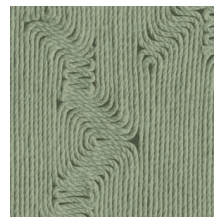
64520



64521



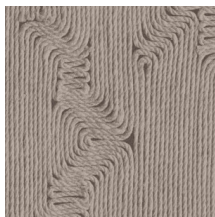
64522



64523



64524



64525

## View



More info? [Click here](#)

Order samples, calculate quantities, view instructional videos, download technical information and more:  
[www.arte-international.com](http://www.arte-international.com)



ARTE®

wallcoverings for the ultimate in refinement