



# JAVA

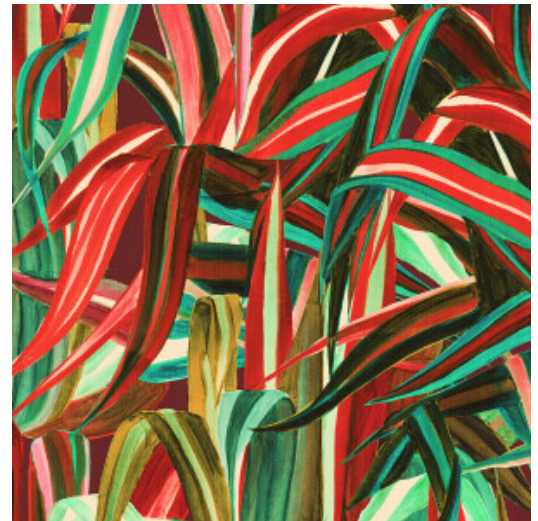
Collection Décors & Panoramiques

## Story behind the collection

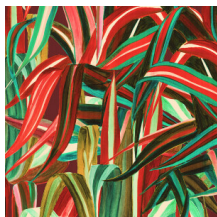
Each panoramic or decor immerses you in a fairy-tale or intriguing story. Not only the pattern appeals to the imagination, the material used is also surprising. From velvety soft silk looks and bouclé fabrics to sophisticated linen effects.

## Technical specifications

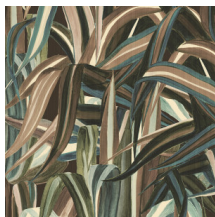
Reference	<u>72010A</u> • Cherry
Product category	Exquisite
Composition	Natural wallcovering on non-woven backing
Description	An exuberant botanical decor with the feel of a hand-painted wallcovering, printed on a fil-à-fil jute
Dimensions	Width 100 cm (39.37"), sold by the linear metre/yard
Pattern repeat	Drop match 200/100 cm (78.74"/39.37")
Remark	Java is made from natural jute fibres. These are vertically aligned and glued to the surface with the fil-à-fil technique, creating a unique textile surface. The irregularity of the jute yarn is typical for a natural product and enhances the beauty of the wallcovering
Adhesive	Arte Clearpro or a good quality dispersion adhesive
How to paste	Paste the wall
Light resistance	Good lightfastness
How to remove	Strippable
Fire retardant EU	B-s1, d0
Fire retardant US	Class A
Maintenance	Spongeable during hanging (dab away damp glue)



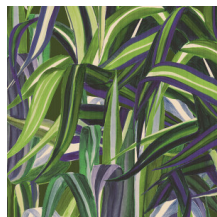
## Colourways (3)



72010A



72011A



72012A

## View



More info? [Click here](#)

Order samples, calculate quantities, view instructional videos, download technical information and more:  
[www.arte-international.com](http://www.arte-international.com)



ARTE®

wallcoverings for the ultimate in refinement