



ANICCA

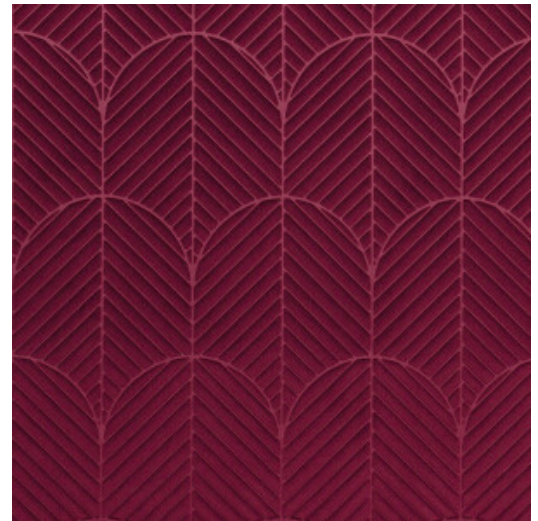
Collection Kanso

Story behind the collection

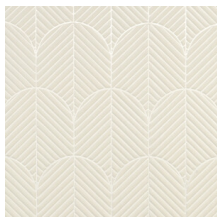
Step into the world of Kanso, inspired by the Japanese concept of minimalism and simplicity in interior design. The collection embodies the essence of design, bringing together sleek and seemingly simple geometric patterns. The pronounced texture of the wallcoverings adds a tactile dimension to the room, while the soft velvet fabric lends it a sense of warmth and cosiness. The result is a collection that exudes luxury without excess, where all the patterns and colours are carefully designed to offer timeless elegance.

Technical specifications

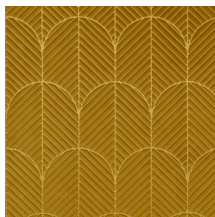
Reference	<u>72522</u> • Passion
Product category	Couture
Composition	3D textile wallcovering on non-woven backing
Description	Geometric pattern creating a captivating 3D effect with a soft velvet textile finish
Dimensions	Width 120 cm (47.24"), sold by the linear metre/yard
Pattern repeat	Free match 0 cm (0.00"), respecting the design height of 31 cm (12.20")
Remark	Stain repellent and positive acoustic effect
Adhesive	Arte Clearpro or a good quality dispersion adhesive
How to paste	Paste the wall
Light resistance	Good lightfastness
How to remove	Strippable
Fire retardant EU	C-s2, d0
Fire retardant US	Class A
Maintenance	Spongeable during hanging (dab away damp glue)



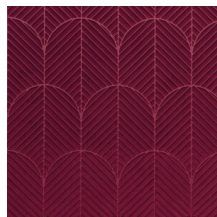
Colourways (5)



72520



72521



72522

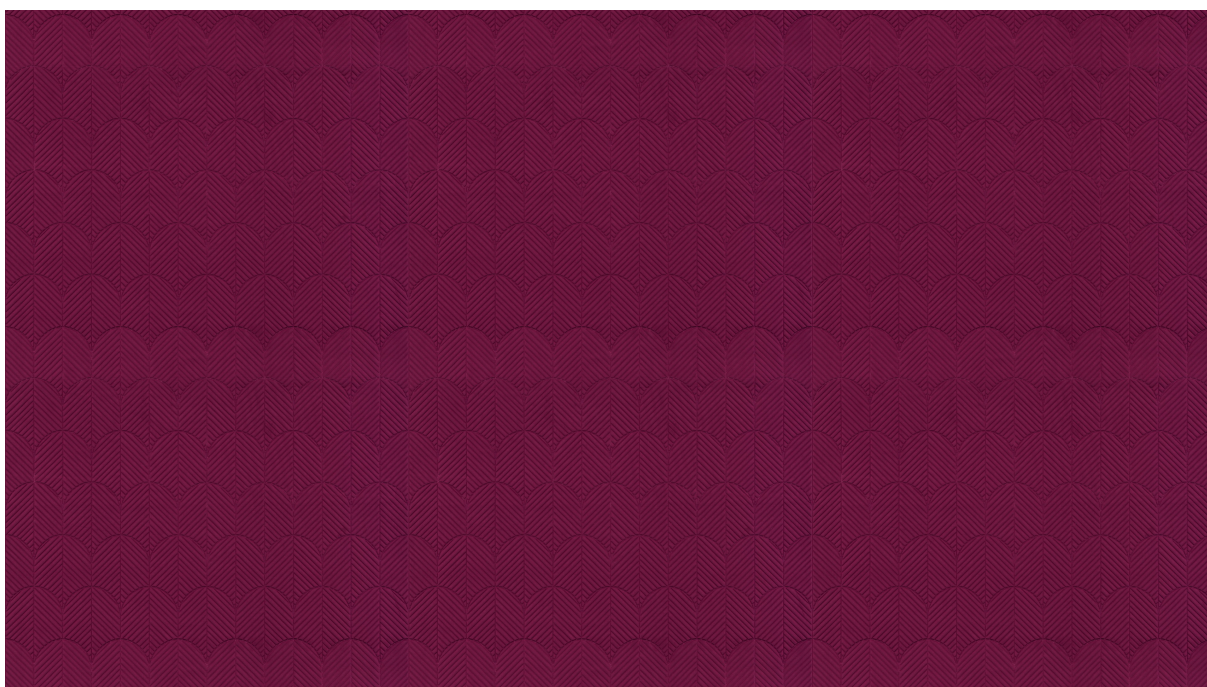


72523



72524

View



← 120 cm (47.24") →

More info? [Click here](#)

Order samples, calculate quantities, view instructional videos, download technical information and more:
www.arte-international.com



ARTE®

wallcoverings for the ultimate in refinement