



# BISEAU

Collection Marqueterie

## Story behind the collection

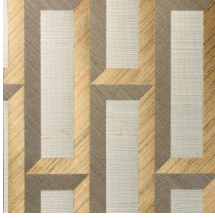
The natural product sisal, a hardwearing fibre from the agave plant, forms the basis of the Marqueterie collection. The natural woven pieces are cut and arranged by hand in different patterns. The traditional marquetry or inlay reveals striking geometric figures. Both the different direction of the weave and the colours create an unusual depth and texture to this 100% hand-made wallcovering. Depending on the incidence of light and the viewing position, a subtle sheen will become apparent.

## Technical specifications

|                   |   |
|-------------------|---|
| Reference         | <u>72730</u> • Warm White   |
| Product category  | Couture   |
| Composition       | Natural wallcovering on non-woven backing   |
| Description       | Inspired by a decorative frame with mitred corners. The different directions of the sisal weave give an optical 3D effect |
| Dimensions        | Width 90 cm (35.43"), sold by the linear metre/yard   |
| Pattern repeat    | Straight match 25 cm (9.84")  |
| Adhesive          | Arte Clearpro or a good quality dispersion adhesive   |
| How to paste      | Paste the wall and wallcovering   |
| Light resistance  | Moderate lightfastness  |
| How to remove     | Strippable  |
| Fire retardant EU | B-s1, d0  |
| Fire retardant US | Class A   |
| Maintenance       | Spongeable during hanging (dab away damp glue)  |



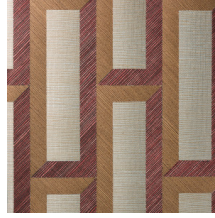
## Colourways (7)



72720



72721



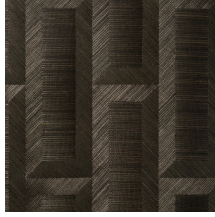
72722



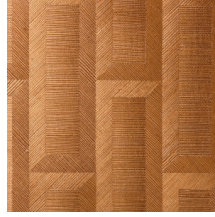
72723



72730

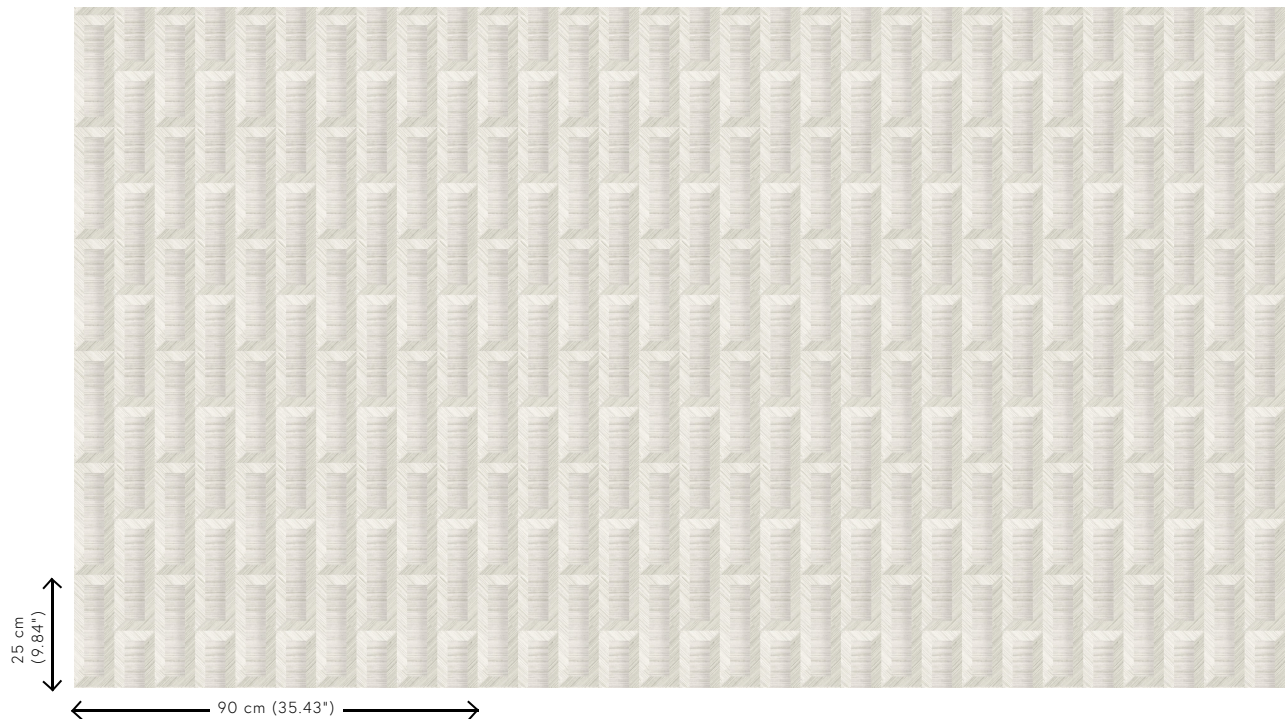


72731



72732

## View



More info? [Click here](#)

Order samples, calculate quantities, view instructional videos, download technical information and more:  
[www.arte-international.com](http://www.arte-international.com)



ARTE®

wallcoverings for the ultimate in refinement