

LINE

Collection All Naturals

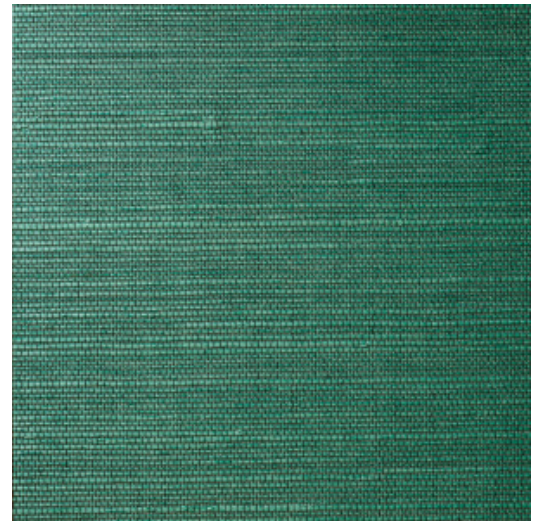


Story behind the collection

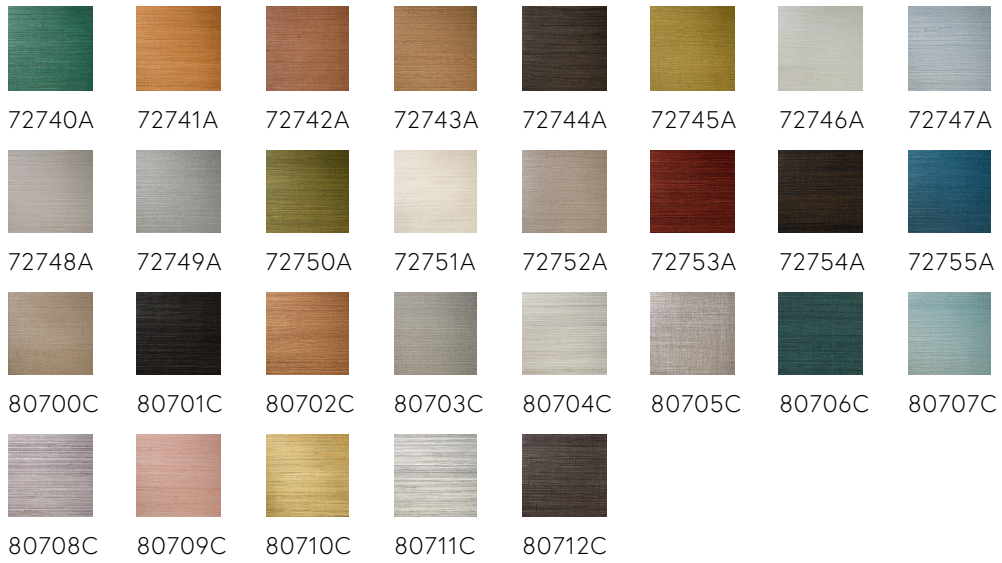
Arte has always had a predilection for unusual materials, with the brand's designers creating superb wallcoverings from many unique materials they find around the world. Designs with natural materials are a mainstay of its collections. Raffia, sisal, mica and banana bark are just a few of the stunning natural products Arte uses for its amazingly diverse range of natural wallcoverings. This collection is a homage to the beauty of these products.

Technical specifications

Reference	<u>72740A</u> • Malachite Green
Product category	Couture
Composition	Natural wallcovering on paper backing
Description	Plain wallcovering made of sisal, with many natural shades
Dimensions	Width 90 cm (35.43"), sold by the linear metre/yard
Pattern repeat	Free match 0 cm (0.00")
Adhesive	Arte Clearpro or a good quality dispersion adhesive
How to paste	Moisten the product, paste the wall
Light resistance	Moderate lightfastness
How to remove	Peelable
Fire retardant EU	B-s1, d0
Fire retardant US	Class A
Maintenance	Spongeable during hanging (dab away damp glue)



Colourways (29)



More info? [Click here](#)

Order samples, calculate quantities, view instructional videos, download technical information and more:
www.arte-international.com



ARTE®

wallcoverings for the ultimate in refinement