

# TULLE


Collection Manila

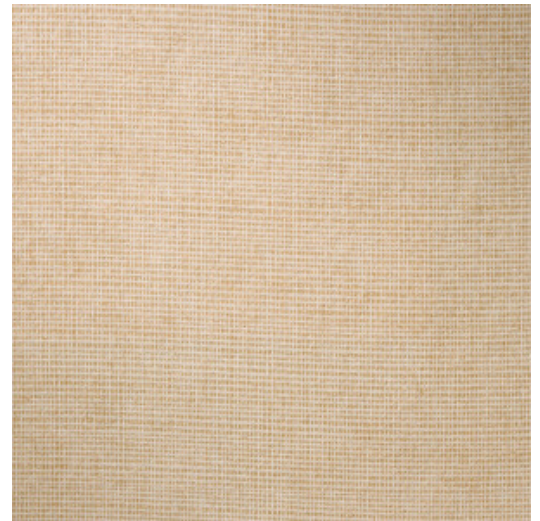


## Story behind the collection

Floral patterns in combination with organic shapes are the common thread throughout the Manila collection.

## Technical specifications

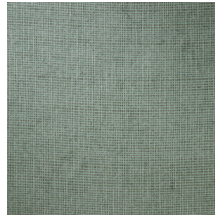
Reference	<u>73080A</u> • Sand
Product category	Refined
Composition	Wallpaper on non-woven backing
Description	Timeless wallpaper with a realistic textile effect
Dimensions	Rolls of 8.50 m x 0.70 m = 6 m <sup>2</sup> (9.30 yds x 27.56" = 64 sq. ft.)
Pattern repeat	Free match 0 cm (0.00")
Adhesive	Arte Clearpro or a good quality dispersion adhesive
How to paste	Paste the wall
Light resistance	Good lightfastness
How to remove	Strippable
Fire retardant EU	B-s1, d0
Fire retardant US	Class A
Maintenance	Washable
IMO Certified	 0493/22



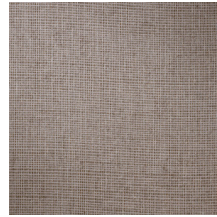
## Colourways (14)



73080A



73081A



73082A



73083A



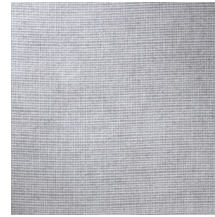
73084A



73085A



73086A



73087A



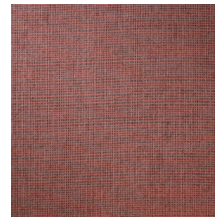
73088A



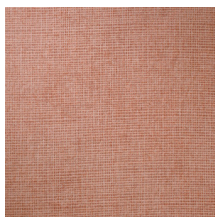
73089A



73090A



73091A



73092A



73093A

More info? [Click here](#)

Order samples, calculate quantities, view instructional videos, download technical information and more:  
[www.arte-international.com](http://www.arte-international.com)



ARTE®

wallcoverings for the ultimate in refinement