

# TÉNÉRÉ

Collection Kharga

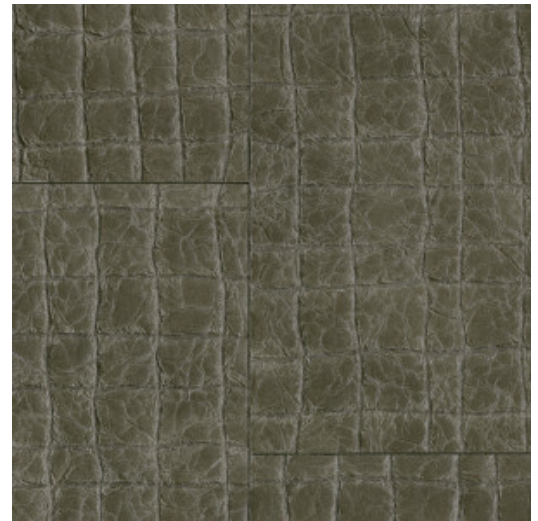


## Story behind the collection

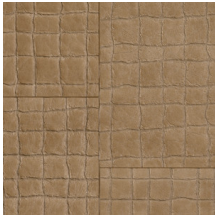
The Kharga oasis was an important stop on the ancient trade route that connected various different oases in Egypt. This tour through the Sahara brings every aspect of the desert to life in the Kharga collection, from the dazzling afternoon sun to the star-studded sky at night and from the shapes of the dunes to the fine structure of desert sand. Even the details and materials used in the traditional carpets and robes of nomads are featured. In short, this collection is highly reminiscent of the mysterious desert life.

## Technical specifications

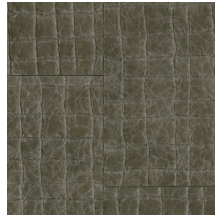
Reference	<u>74021</u> • Burnt Olive
Product category	Couture
Composition	Non-woven wallcovering
Description	The dehydrated and cracked desert soil forms the inspiration for this lacquered imitation leather
Dimensions	Width 91.44 cm (36.00"), sold by the linear metre/yard
Pattern repeat	Drop match 30/15 cm (11.81"/5.91")
Adhesive	Arte Clearpro or a good quality dispersion adhesive
How to paste	Moisten the product, paste the wall and paste the wallcovering
Light resistance	Moderate lightfastness
How to remove	Strippable
Fire retardant EU	B-s1, d0
Maintenance	Spongeable during hanging (dab away damp glue)



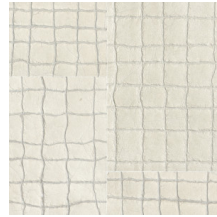
## Colourways (8)



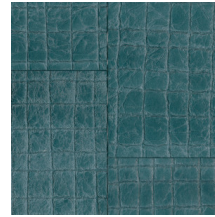
74020



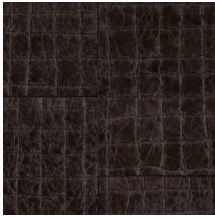
74021



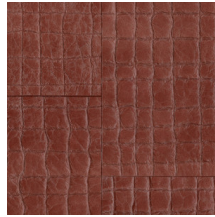
74022



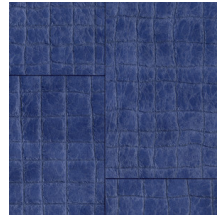
74023



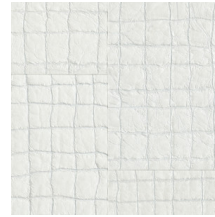
74024



74025

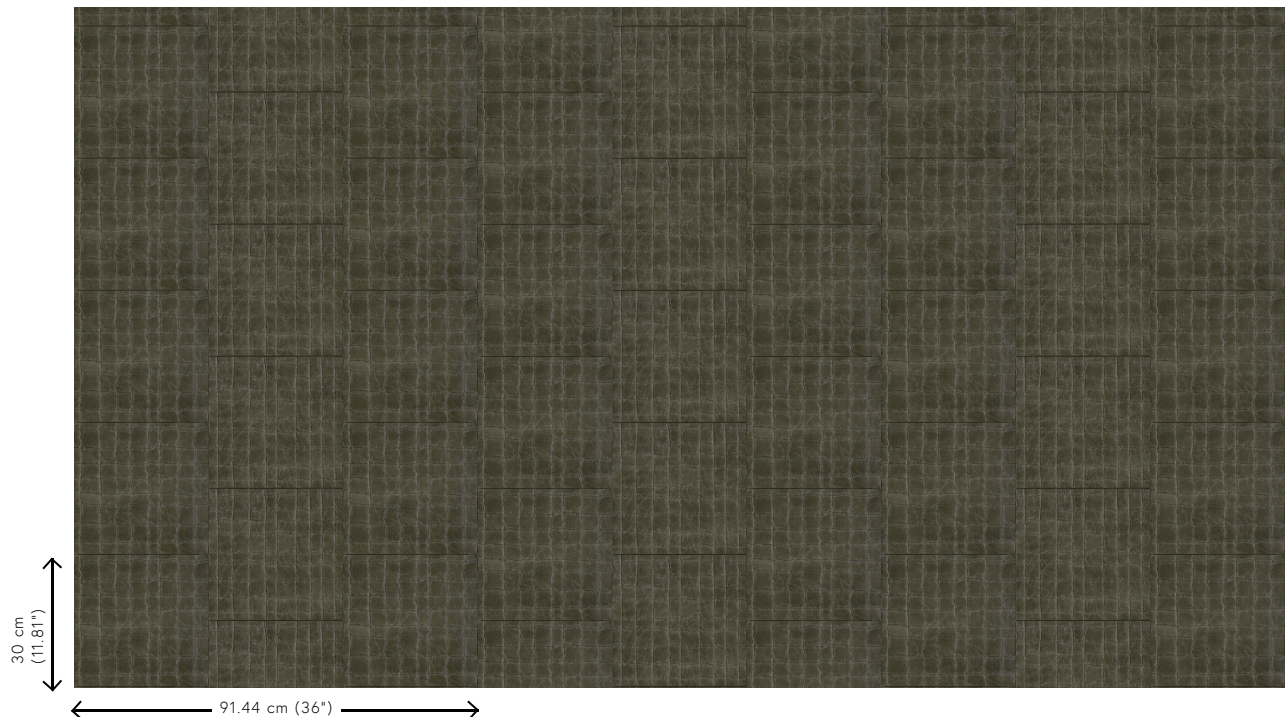


74026



74027

## View



More info? [Click here](#)

Order samples, calculate quantities, view instructional videos, download technical information and more:  
[www.arte-international.com](http://www.arte-international.com)



ARTE®

wallcoverings for the ultimate in refinement