

UNITE

Collection Oculaire



Story behind the collection

A hand-made wallcovering of sisal fibres. Sisal is a very strong fibre, derived from the agave plant. It is woven by hand. Pieces cut from the fabric with a die. The cut-out elements are then inlaid by hand and glued in a pattern that creates a trompe-l'oeil effect. A process that must be done with extreme care, and is therefore reserved for the true professional.

Technical specifications

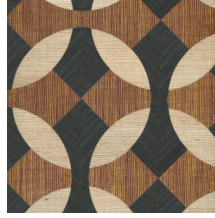
Reference	<u>80601</u>
Product category	Couture
Composition	Natural wallcovering on non-woven backing
Description	Wallcovering made from hand-woven sisal fibres
Dimensions	Width 90 cm (35.43"), sold by the linear metre/yard
Pattern repeat	Straight match 45 cm (17.72")
Adhesive	Arte Clearpro or a good quality dispersion adhesive
How to paste	Paste the wall and wallcovering
Light resistance	Moderate lightfastness
How to remove	Strippable
Fire retardant EU	B-s1, d0
Fire retardant US	Class A
Maintenance	Washable



Colourways (7)



80600



80601



80602



80603



80604

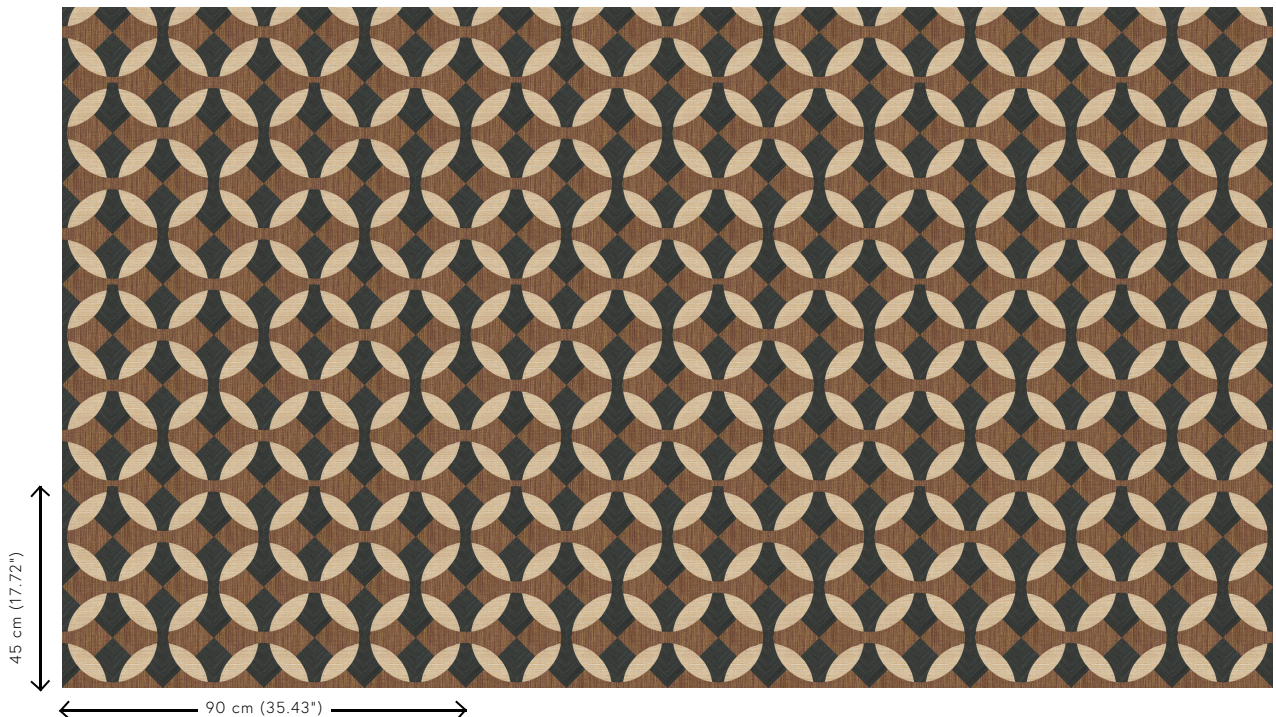


80605



80606

View



More info? [Click here](#)

Order samples, calculate quantities, view instructional videos, download technical information and more:
www.arte-international.com



ARTE®

wallcoverings for the ultimate in refinement