

# LINE

Collection Osmanthus

---



## Story behind the collection

This collection exudes refinement and luxury, not only through the sophisticated embroidery technique but also due to the use of natural materials such as sisal, cotton and hemp. The aesthetic aspect and purity of nature are in perfect balance. The materials, designs and colours in this collection refer to the Far East.

## Technical specifications

Reference	<u>80702B</u> • Copper
Product category	Couture
Composition	Natural wallcovering on paper backing
Description	Plain wallcovering made of sisal, with many natural shades
Dimensions	Width 90 cm (35.43"), sold by the linear metre/yard
Pattern repeat	Free match 0 cm (0.00")
Adhesive	Arte Clearpro or a good quality dispersion adhesive
How to paste	Moisten the product, paste the wall
Light resistance	Moderate lightfastness
How to remove	Peelable
Fire rating EU	B-s1, d0
Fire rating US	Class A
Maintenance	Spongeable during hanging (dab away damp glue)



## Colourways (13)



8 0700B



8 0701B



8 0702B



8 0703B



8 0704B



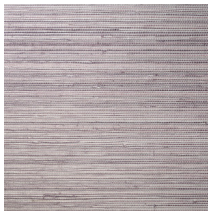
8 0705B



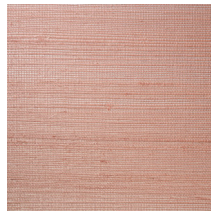
8 0706B



8 0707B



8 0708B



8 0709B



8 0710B



8 0711B



8 0712B

More info? [Click here](#)

Order samples, calculate quantities, view instructional videos, download technical information and more:  
[www.arte-international.com](http://www.arte-international.com)



ARTE®

wallcoverings for the ultimate in refinement