

# SHAGREEN

Collection Icons



## Story behind the collection

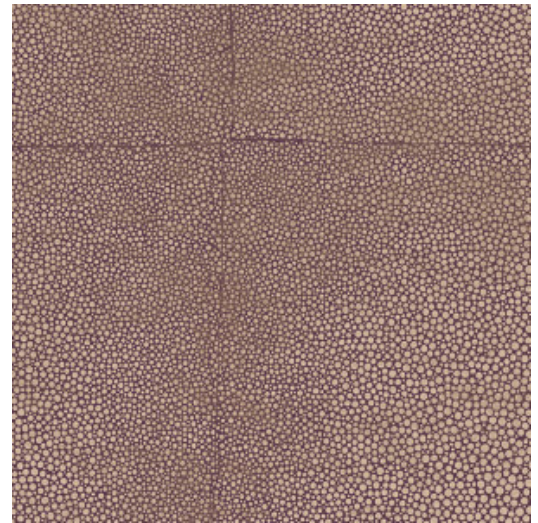
Icons charms with its versatility of materials, all established values in interior decorating, such as shagreen leather (galuchat), bouclé fabric, metal accents and rattan. However, the application of these evergreens on the wall is extremely surprising and original. Typical are the various geometric patterns that show a striking block motif. Not only the warm material mix is a surprising factor, the varying incidence of light and the play of matt and gloss also give an extra luxurious dimension.

## Technical specifications

Reference	<b>85527</b> • Brown Taupe
Product category	Exquisite
Composition	Non-woven wallcovering
Description	Based on leather made of ray skin, known as shagreen leather
Dimensions	Width 90 cm (35.43"), sold by the linear metre/yard
Pattern repeat	Drop match 64/21.33 cm (25.20"/8.40")
Adhesive	Arte Clearpro or a good quality dispersion adhesive
How to paste	Paste the wall
Light resistance	Good lightfastness
How to remove	Strippable
Fire retardant EU	B-s1, d0
Fire retardant US	Class A
Maintenance	Washable
IMO Certified	

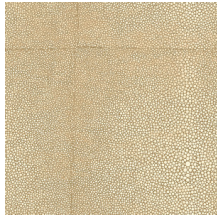


0493/22

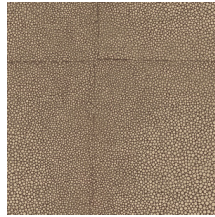




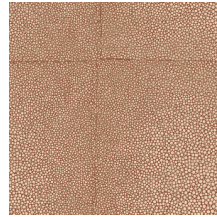
## Colourways (8)



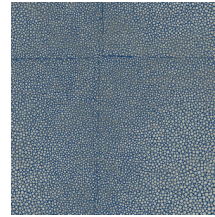
85520



85521



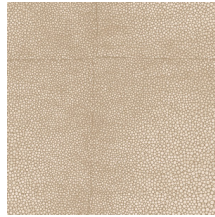
85522



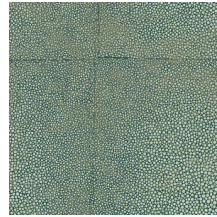
85523



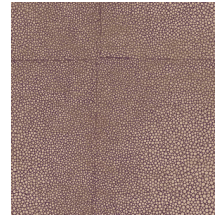
85524



85525

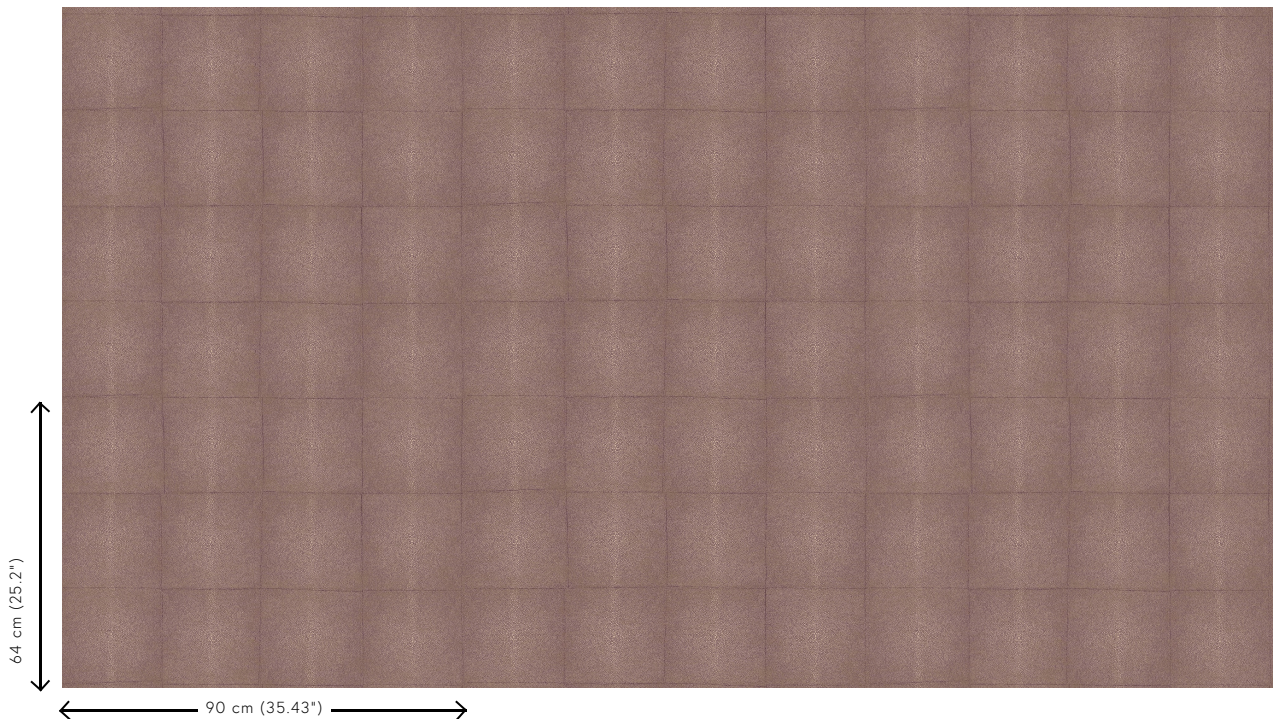


85526



85527

## View



More info? [Click here](#)

Order samples, calculate quantities, view instructional videos, download technical information and more:  
[www.arte-international.com](http://www.arte-international.com)



ARTE®

wallcoverings for the ultimate in refinement