



# FIELDS

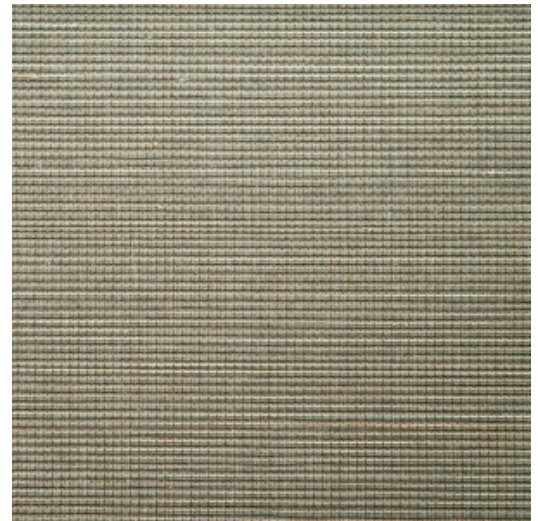
Collection Boracay

## Story behind the collection

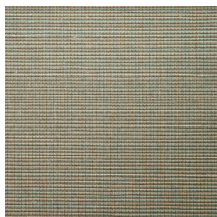
The Boracay collection is produced from woven banana leaves and water hyacinth. The plant material was bonded to a non-woven backing with the utmost care and attention and then woven and dyed. The result is a valuable and exceptionally decorative natural product that loves to be handled with care.

## Technical specifications

Reference	<u>90060</u> • Moss
Product category	Couture
Composition	Natural wallcovering on paper backing
Description	Exclusive hand-made wallcovering made from hand-woven abaca-fibres
Dimensions	Width 90 cm (35.43"), sold by the linear metre/yard
Pattern repeat	Free match 0 cm (0.00")
Remark	90063-66-67: on non-woven backing / 90060-61-62-64-65: on paper backing. It is specific to this product that you can clearly see the seams; it is an intended effect that emphasizes the authentic charm
Adhesive	Arte Clearpro or a good quality dispersion adhesive
How to paste	Moisten the product, paste the wall
Light resistance	Moderate lightfastness
How to remove	Wet removable
Fire retardant EU	B-s1, d0
Fire retardant US	Class A
Maintenance	Washable



## Colourways (8)



90060



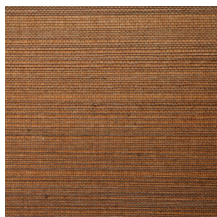
90061



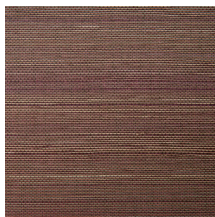
90062



90063



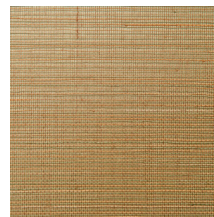
90064



90065



90066



90067

More info? [Click here](#)

Order samples, calculate quantities, view instructional videos, download technical information and more:  
[www.arte-international.com](http://www.arte-international.com)



ARTE®

wallcoverings for the ultimate in refinement