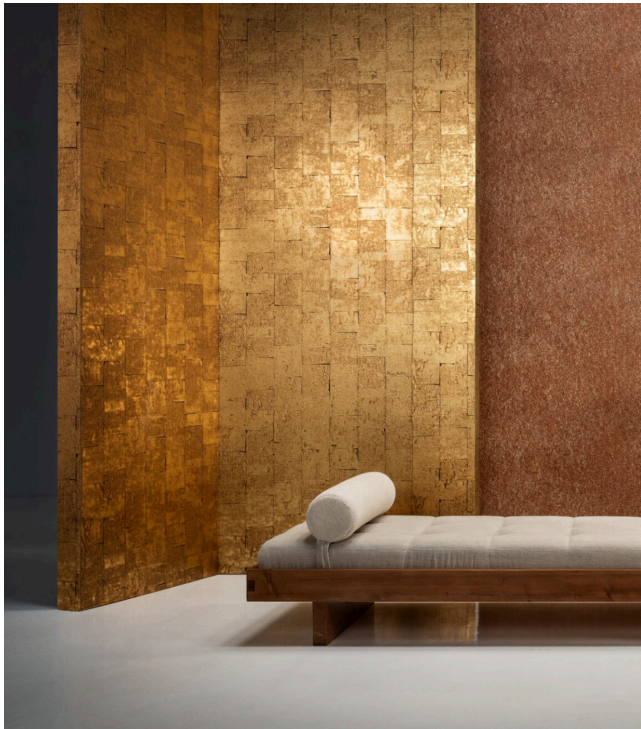


# GILDED HERITAGE

Collection Boutique



## Story behind the collection

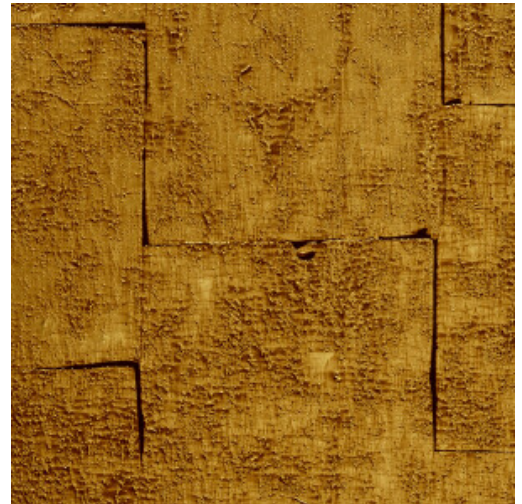
The wallcoverings in this collection revisit the glamour of mid-century Japan. After World War II, Japan experienced tremendous growth, sparking a transformation marked by vibrant optimism and progressive thinking. In interior design, this hopeful mood manifested itself in new, mostly shiny materials and exuberant patterns, of which there are an abundance in the Boutique wallcoverings.

## Technical specifications

Reference	<u>90500</u> • Gold Rush
Product category	Exquisite
Composition	Non-woven wallcovering
Description	This dazzling design in metallic colours, which was inspired by gold leaf, references the shiny materials that were all the rage in post-war Japan
Dimensions	Width 90 cm (35.43"), sold by the linear metre/yard
Pattern repeat	Drop match 64/32 cm (25.20"/12.60")
Adhesive	Arte Clearpro or a good quality dispersion adhesive
How to paste	Paste the wall
Light resistance	Good lightfastness
How to remove	Strippable
Fire retardant EU	B-s1, d0
Fire retardant US	Class A
Maintenance	Washable
IMO Certified	



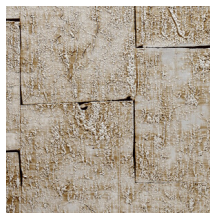
0493/22



## Colourways (4)



90500



90501

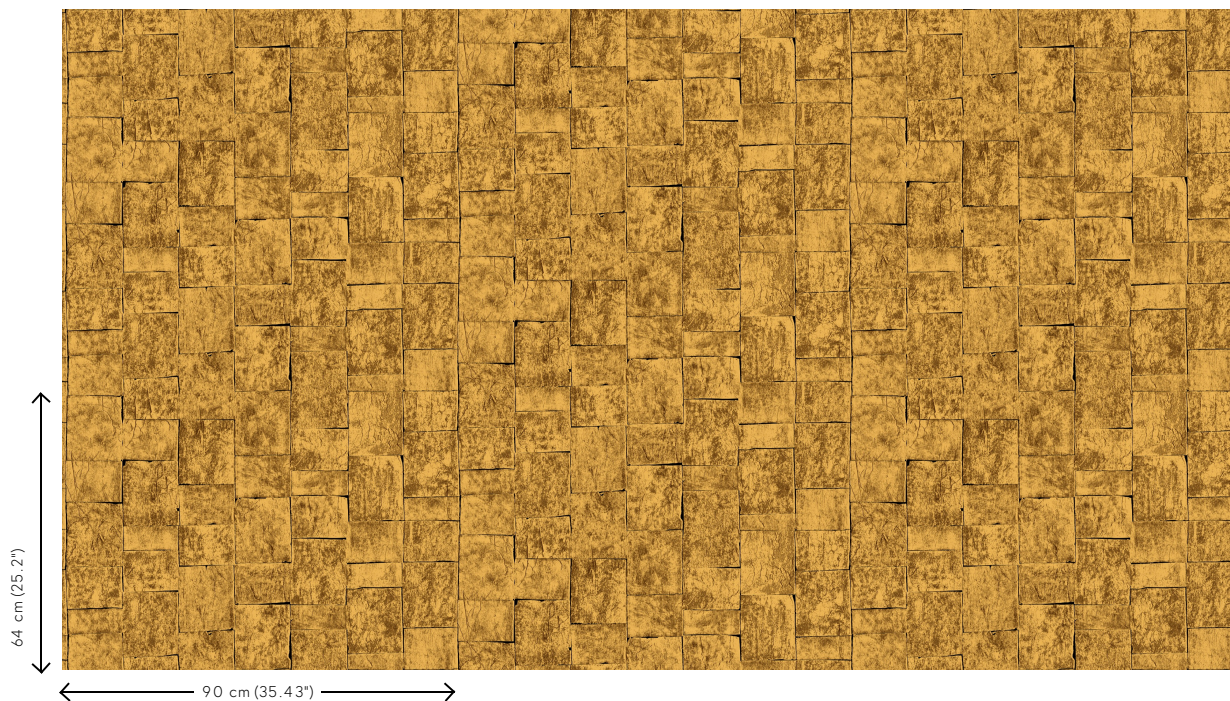


90502



90503

## View



More info? [Click here](#)

Order samples, calculate quantities, view instructional videos, download technical information and more:  
[www.arte-international.com](http://www.arte-international.com)



ARTE®

wallcoverings for the ultimate in refinement