

CANYON

Collection Boutique



Story behind the collection

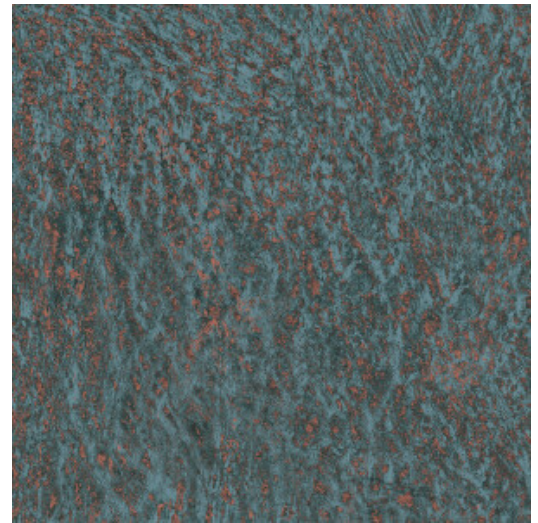
The wallcoverings in this collection revisit the glamour of mid-century Japan. After World War II, Japan experienced tremendous growth, sparking a transformation marked by vibrant optimism and progressive thinking. In interior design, this hopeful mood manifested itself in new, mostly shiny materials and exuberant patterns, of which there are an abundance in the Boutique wallcoverings.

Technical specifications

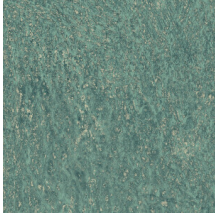
| | |
|-------------------|---|
| Reference | <u>90554</u> • Denim |
| Product category | Exquisite |
| Composition | Non-woven wallcovering |
| Description | An abstract interpretation of the different types of rocks in a canyon |
| Dimensions | Width 90 cm (35.43"), sold by the linear metre/yard |
| Pattern repeat | Free match 0 cm (0.00") |
| Adhesive | Arte Clearpro or a good quality dispersion adhesive |
| How to paste | Paste the wall |
| Light resistance | Good lightfastness |
| How to remove | Strippable |
| Fire retardant EU | B-s1, d0 |
| Fire retardant US | Class A |
| Maintenance | Washable |
| IMO Certified |  |



0493/22



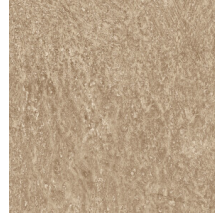
Colourways (10)



90550



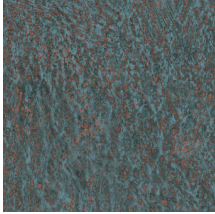
90551



90552



90553



90554



90555



90556



90557



90558



90559

More info? [Click here](#)

Order samples, calculate quantities, view instructional videos, download technical information and more:
www.arte-international.com



ARTE®

wallcoverings for the ultimate in refinement