

# ALL'OMBRA DEI CIPRESSI

Collection Décors & Panoramiques



## Story behind the collection

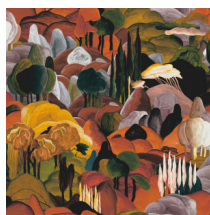
Each panoramic or decor immerses you in a fairytale or intriguing story. Not only the pattern appeals to the imagination, the material used is also surprising. From velvety soft silk looks and bouclé fabrics to sophisticated linen effects.

## Technical specifications

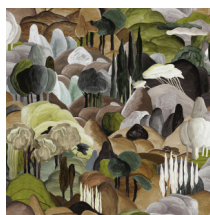
Reference	<u>97502</u> • Midnight Dream
Product category	Couture
Composition	Textile wallcovering on non-woven backing
Description	Decor of a Tuscan landscape with rounded shapes, finished in velvety chenille
Dimensions	Width 130 cm (51.18"), sold by the linear metre/yard
Pattern repeat	Drop match 130/65 cm (51.18"/25.59")
Adhesive	Arte Clearpro or a good quality dispersion adhesive
How to paste	Paste the wall
Light resistance	Good lightfastness
How to remove	Strippable
Fire rating EU	B-s1, d0
Fire rating US	Class A
Maintenance	Spongeable during hanging (dab away damp glue)



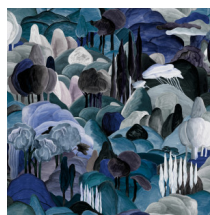
### Colourways (3)



97500

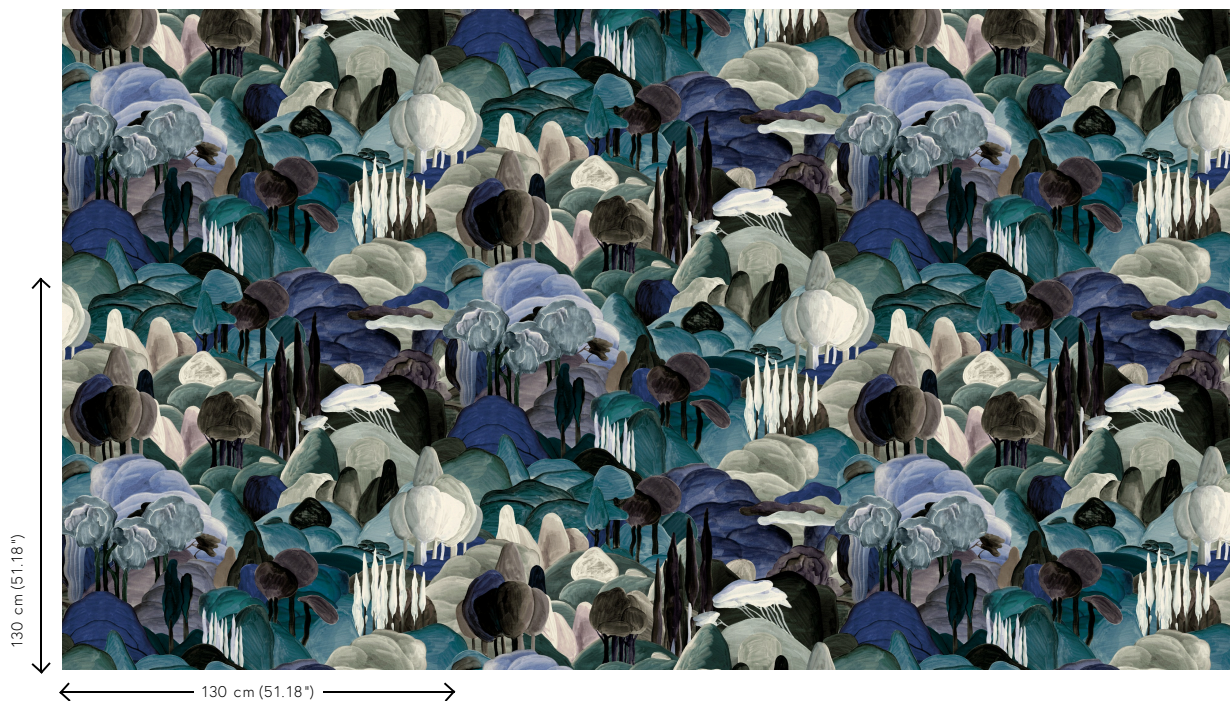


97501



97502

### View



More info? [Click here](#)

Order samples, calculate quantities, view instructional videos, download technical information and more:  
[www.arte-international.com](http://www.arte-international.com)



ARTE®

wallcoverings for the ultimate in refinement